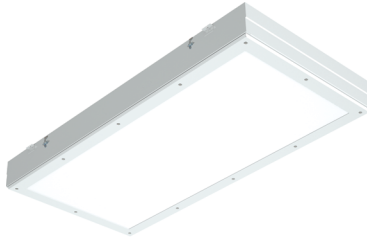


# SIMPLESEAL™

## CSEGR0 SERIES – LF GRID MOUNT – TOP ACCESS – OVERLAPPING DOOR

### PRODUCT FEATURES:

- » Recessed ceiling mount, top access – grid; 2'x2' (60.96cmx60.96cm), 2'x4' (60.96cmx121.92cm)
- » Top access for easy relamping for walk-on ceilings
- » Optional Food Zone/non-Contact listing for food processing applications
- » Suitable for use in ISO 5 rated cleanrooms



### PROJECT INFORMATION

Job Name \_\_\_\_\_

Fixture Type \_\_\_\_\_

Catalog Number \_\_\_\_\_

Approved by \_\_\_\_\_

### SPECIFICATIONS

**HOUSING:** 18-gauge CRS. Hole-free one-piece seam welded construction. White TGIC polyester powder coat finish – 5-step pre-treatment. Salt spray test: 1,000 hours; Reflectance: 92%.

**TOP ACCESS DOOR:** Full size 16-gauge CRS continuous hinged door secured with stainless steel rotary action latches – (2) for 2x2 (60.96cmx60.96cm), (3) for 2x4 (60.96cmx121.92cm). Multiple return fabrication for strength and easy handling.

**DOORFRAME:** 20-gauge type 304 stainless steel (#4 finish-post fabrication). One-piece 60° beveled perimeter construction. Continuous angle lens retention system. Mechanical guide for doorframe fastener alignment. Doorframe secured to housing with stainless steel aircraft cables and captive flush mounted Phillips head stainless steel fasteners – (8) for 2x2 (60.96cmx60.96cm), (12) for 2x4 (60.96cmx121.92cm). Thumb screws used for FN option.

**LENS:** .125" (.32cm) #12 high impact acrylic lens sealed to perimeter ledge of lens aperture with urethane sealant and secured with continuous lens retention system. Lens orientation – smooth side out. See Options for alternate lens selections. If required, specify lens overlay combinations inner/outer (Example: R/T). FN option includes FDA approved Food Zone clear polycarbonate lens. Can be combined with prismatic inner lens (specify type in Lens Type field).

**GASKET MATERIALS:** One-piece closed cell extruded nitrile gasket seals doorframe to ceiling structure. EPDM D-shape gasketing seals top access door to housing.

**ELECTRICAL:** Quantity and type as specified – see Ordering Information. All ballasts UL listed Class P. Wireway hole provided with hub/ring/plug assembly. See Ordering Information for alternate or multiple ballasts, sealed wireway and optional equipment. Lamps by others.

**INSTALLATION:** 1.0" (2.54cm), 1.5" (3.81cm) and 2.0" (5.08cm) T-Bar installation standard. See Options for T-Bar clips and earthquake clips. Consult factory for custom T-Bar ceilings.

**WARRANTY:** Limited one (1) year Kenall fluorescent warranty.

**LISTINGS:** UL and CUL Listed for Wet Location. UL Classified IP65. NSF2 Splash/Non-Food Zone. Optional NSF2 Food Zone/Non-Contact. CCEA Approved. Meets K230 Leakage Standard for luminaire leakage in pressurized environments and FED-STD-209E/Class 100 (ISO 5) Cleanrooms.



### ORDERING INFORMATION (Ex: CSEGR022-4-17-IS-1-120-5F-2H-T)

Model	Lamp Qty/Type	Ballast Type	Ballast Qty	Voltage	Doorframe Option	Housing	Lens Type	Options
<b>Model</b>		<b>Ballast Type</b>			<b>Doorframe Options</b>		<b>Lens Type</b>	
<b>CSEGR022</b> 2'x2'		<b>IS</b> Instant Start Electronic <10% THD (T8, TH8HO)			<b>5F</b> 20-Ga Type 304 SS (STD)		<b>Acrylic</b>	
<b>CSEGR024</b> 2'x4'		<b>RS</b> Rapid Start Electronic <10% THD (T8, T5HO, T5HO)			<b>2F</b> 20-Ga CRS		<b>T</b> .125" Clear	
<b>Lamp Quantity/Lamp Type</b>		<b>SB</b> Specified Ballast			<b>XF</b> 20-Ga Type 316 SS		<b>U</b> .125" #12 Prismatic High Impact Acrylic (STD)	
<b>2'x2'</b>		<b>Ballast Quantity</b>			<b>PAF</b> .063" Painted Fabricated Aluminum		<b>Polycarbonate</b>	
<b>2-17</b> Two F17T8		<b>1</b> One			<b>Housing Options</b>		<b>2</b> .125" #12 Prismatic	
<b>3-17</b> Three F17T8		<b>2</b> Two			<b>2H</b> 18-Ga CRS (STD)		<b>G</b> .125" Clear	
<b>4-17</b> Four F17T8		<b>Voltage</b>			<b>5H</b> 20-Ga Type 304 SS		<b>Tempered Glass</b>	
<b>6-17</b> Six F17T8		<b>120</b> 120 Volts			<b>5XH</b> 20-Ga Type 316 SS		<b>TG</b> .250" Textured Tempered Glass	
<b>2'x4'</b>		<b>277</b> 277 Volts					<b>Specified Lens</b>	
<b>2-32</b> Two F32T8		<b>347</b> 347 Volts					<b>SL</b> Specified Lens	
<b>3-32</b> Three F32T8							<b>Options</b>	
<b>4-32</b> Four F32T8							<b>EL</b> Standard Lumen EL Pack	
<b>6-32</b> Six F32T8							<b>PEL</b> High Lumen EL Pack	
<b>2-44</b> Two F48T8HO							<b>SEL</b> Specified EL Pack	
<b>3-44</b> Three F48T8HO							<b>DLN</b> LED Night Light w/Light Level Control (100%-20%)	
<b>4-44</b> Four F48T8HO							<b>EC</b> Earthquake Clips	
<b>2-54</b> Two F54T5HO							<b>FN**</b> Food Zone/Non-Contact	
<b>3-54</b> Three F54T5HO							<b>FS</b> Fuse & Holder	
<b>4-54</b> Four F54T5HO							<b>RF</b> Radio Frequency Filter	
							<b>TC</b> T-Bar Clips	
							<b>UV</b> UV Filtering Lens (Specify)	

\*\* Only available in combination with a prismatic inner lens (specified in Lens Type). For nonprismatic, only the FDA approved Food Zone clear polycarbonate lens will be provided (leave Lens Type blank). Not available with TG lens type.



www.kenall.com | P: 800-4-Kenall | F: 262-891-9701 | 10200 55th Street Kenosha, Wisconsin 53144, USA

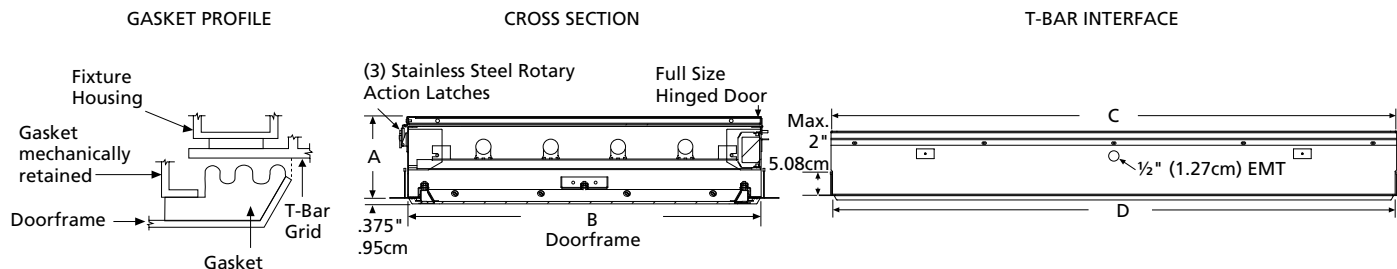
This product complies with the Buy American Act: manufactured in the United States with more than 50% of the component cost of US origin. It may be covered by patents found at www.kenall.com/patents. Content of specification sheets is subject to change; please consult www.kenall.com for current product details. ©2022 Kenall Mfg. Co.

A brand of Legrand

# SIMPLESEAL™

## CSEGRO SERIES – LF GRID MOUNT – TOP ACCESS – OVERLAPPING DOOR

### DIMENSIONAL DATA



**DIMENSIONAL DATA (IN INCHES & CENTIMETERS)**

	A	B	C	D
<b>2x2</b>	5.46	23.44x23.44	24.00	23.75
<b>60.96x60.96</b>	13.87	59.54x59.54	60.96	60.32
<b>2x4</b>	5.46	23.44x47.44	48.00	47.75
<b>60.96x121.92</b>	13.87	59.54x120.50	121.92	121.29

NOTE: Consult factory for 6" (15.24cm) Foam Ceiling



[www.kenall.com](http://www.kenall.com) | P: 800-4-Kenall | F: 262-891-9701 | 10200 55th Street Kenosha, Wisconsin 53144, USA

A brand of Legrand

This product complies with the Buy American Act: manufactured in the United States with more than 50% of the component cost of US origin. It may be covered by patents found at [www.kenall.com/patents](http://www.kenall.com/patents). Content of specification sheets is subject to change; please consult [www.kenall.com](http://www.kenall.com) for current product details. ©2022 Kenall Mfg. Co.