

# ENVIROSEAL™

## ES5 SERIES

### PRODUCT FEATURES:

- » Surface mount – ceiling or wall; 5"×24" (12.70cm×60.96cm), 5"×36" (12.70cm×91.44cm), 5"×48" (12.70cm×121.92cm), 5"×96" (12.70cm×243.84cm)
- » Cold rolled steel or stainless steel housing for corrosion resistance
- » Continuous row mount for multiple luminaires
- » IP65 Option available



### PROJECT INFORMATION

Job Name \_\_\_\_\_

Fixture Type \_\_\_\_\_

Catalog Number \_\_\_\_\_

Approved by \_\_\_\_\_

### SPECIFICATIONS

**HOUSING:** One-piece, seam-welded 20-gauge CRS. Base provided with four-point mounting holes and one wireway hole. Lens is positioned in baseplate channels and retained with stainless steel fastener(s). Base mounts flush to ceiling or wall surface.

**LENS/GASKET:** UV-stabilized, pearlescent or clear polycarbonate. Smooth exterior, linear prismatic interior. Nominal thickness .125" (.32cm). IP65 option provided with linear silicone gasket to seal lens frame to housing.

**FINISH:** Brushed stainless steel finish (#4B) or white TGIC polyester powder coat – 5-stage pre-treatment; Salt spray test: 1,000 hours; Reflectance: 92%.

**HARDWARE:** One Type 302 stainless steel Phillips head fastener secures lens in housing channel.

**ELECTRICAL:** LED: Available 3000K, 3500K, 4000K and 5000K color temperatures, 82 CRI. 120-277VAC or 347VAC, 50/60Hz electrical input with serviceable high power factor electronic, constant-current driver (<20% THD, >0.95 PF). Standard 0-10V dimming with 1-100% range and dim-to-dark capabilities (non dim-to-dark with 347V); 330µA max. source current. Optional embedded microwave motion sensor (MS) has factory default settings of 20 minute time out, dims down to 30%. LE: Class P ballast. Fluorescent electronic 120/277 or 347 voltage ballasts, high power factor. Optional one-lamp 90 minute nickel-cadmium battery pack (EL) includes inverter charger, test switch and charging indicator lamp.

**SENSOR & CONTROLS:** Optional sensor available with compatible third party controls. To see the full list of compatible controls, [click here](#).

**SOCKETS:** Shock-resistant fluorescent sockets with internal locking collar to ensure positive lamp retention. Three year warranty on LED lamps and driver for defects resulting in a fixture lumen depreciation of 30% or greater.

**WARRANTY:** Limited five (5) year LED warranty. [Peace of Mind Guarantee against breakage](#).

**LISTINGS:** UL and CUL listed for Wet Location – covered ceiling. UL and CUL listed for Damp Location – horizontal wall mount. Optional UL and CUL Listed for Wet Location (WW Option) – horizontal wall mount. Optional UL certified IP65 per IEC 60598 (IP65 Option) – ceiling mount.



### ORDERING INFORMATION (Ex: ES5-48-1-45L50K-DCC-1-DV-2H-PP-FS)

Model	Length	Lamp Qty/Lamp Type	Ballast/Driver Type	Ballast/Driver Qty	Voltage	Housing	Lens Type	Options
-------	--------	--------------------	---------------------	--------------------	---------	---------	-----------	---------

### ES5

#### Nominal Length

24	2' (60.96cm)
36	3' (91.44cm)
48	4' (121.92cm)
96	8' (243.84cm)

#### Lamp Qty/Type

2' (60.96cm) Lengths	
1-25L30K	25 Watt 3000K LED
1-25L35K	25 Watt 3500K LED
1-25L40K	25 Watt 4000K LED
1-25L50K	25 Watt 5000K LED
1-14^	F14T5
2-14^	F14T5
1-17	F17T8
2-17	F17T8
1-31U	F31T8 – 1.62" (4.11cm) U
2-31U	F31T8 – 1.62" (4.11cm) U

#### 3' (91.44cm) Lengths

1-21	F21T5
2-21	F21T5
1-25	F25T8
2-25	F25T8

#### 4' (121.92cm) Lengths

1-45L30K	45 Watt 3000K LED
1-45L35K	45 Watt 3500K LED
1-45L40K	45 Watt 4000K LED
1-45L50K	45 Watt 5000K LED
1-28^	F28T5
2-28^	F28T5
1-32	F32T8
2-32	F32T8
1-54	F54T5HO
2-54	F54T5HO

#### Lamp Qty/Type (cont'd)

8' (243.84cm) Lengths	
(Lamp Qty per 4' (121.92cm) Cross Section)	
1-45L30K	45 Watt 3000K LED
1-45L35K	45 Watt 3500K LED
1-45L40K	45 Watt 4000K LED
1-45L50K	45 Watt 5000K LED
1-28^	F28T5
2-28^	F28T5
1-32	F32T8
2-32	F32T8
1-54	F54T5HO
2-54	F54T5HO

#### Ballast Type

DCC	Dimming Constant Current (LED)
IS	Elec <10% THD Instant Start (T8)
RS	Elec <10% THD Rapid Start (T5, T5HO, T8)
SB	Specified Ballast

#### Ballast Quantity

1	One
2	Two

#### Voltage

DV	120-277 Volts
347	347 Volt

#### Housing Options

2H	20-Ga CRS; Painted
P5H	20-Ga 304SS; Painted
5H	20-Ga 304SS; Brushed
PXH	20-Ga 316SS; Painted
XH	20-Ga 316SS; Brushed

#### Lens Type

PP	Pearlescent Polycarbonate
CP^	Clear Polycarbonate

#### Options

LEL^	LED Emergency Battery Backup (45L lamp type only)
EL*‡	Standard Lumen EL Pack (450 lumens) (n/a with LED)
PEL*‡	High Lumen EL Pack (1100 lumens) (n/a with LED)
SEL*‡	Specified EL Pack (n/a with LED)
FS^	Single Fuse & Holder
HC^	Row Mount Hub Connector (see KO option)
KO^	Continuous Row Mount - .875" (2.22cm) diameter knockout in end caps (see HC option for Kenall supplied attachment connector)
PM^†	Pendant Mount (damp locations only) – suspension hardware by others
TN120	120 Volt, 13 Watt Twin Tube NPF Night Light (n/a with LED)
TN277	277 Volt, 13 Watt Twin Tube NPF Night Light (n/a with LED)
IP65**•	UL certified IP65 – Ceiling Mount (w/removable end caps – not suitable for continuous row mount)
WW**+•	UL/CUL Wet Location Listing – Horizontal Wall Mount (w/removable end caps – not suitable for continuous row mount)
TR	Tamper Resistant Torx® Fastener
MS	Motion Sensor (4' LED only; n/a with 347 Voltage)

▲ n/a with 347V

\* Option not available with 2' (60.96cm) fixtures, with LED, or F21T5 lamps

\*\* n/a with KO or PM options

^ n/a with IP65 or WW options

+ n/a with IP65 option

‡ 347V available only with F25T8/F32T8 Lamps

† Consult factory for pendant mount hole locations.

• Add .375" (.95cm) to overall length

▼ n/a with LED



www.kenall.com | P: 800-4-Kenall | F: 262-891-9701 | 10200 55th Street Kenosha, Wisconsin 53144, USA

A brand of **legrand**

This product complies with the Buy American Act: manufactured in the United States with more than 50% of the component cost of US origin. It may be covered by patents found at [www.kenall.com/patents](http://www.kenall.com/patents). Content of specification sheets is subject to change; please consult [www.kenall.com](http://www.kenall.com) for current product details. ©2022 Kenall Mfg. Co.

# ENVIROSEAL™

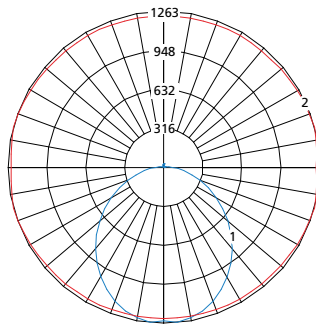
## ES5 SERIES

### PERFORMANCE

Length	Lamp Type	Initial Delivered Lumens		Input Power (W)	Drive Current (mA)	Estd. L70 LED Life (Hrs)
		@ 25°C	Efficacy (lm/W)			
2'	25L30K	2,205	88	25	100	80,000
	25L35K	2,273	91			
	25L40K	2,351	94			
	25L50K	2,412	96			
4'	45L30K	4,410	90	49	100	80,000
	45L35K	4,546	93			
	45L40K	4,701	96			
	45L50K	4,825	98			

Displayed information above is for PP lens type. Info subject to change. Visit [www.kenall.com](http://www.kenall.com) for IES files and additional information.

Model: ES5-48-45L40K-DCC-DV-2H-PP

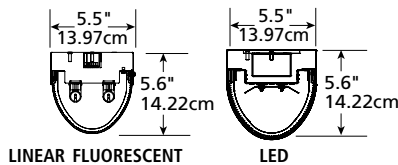


Max Candela = 1263 Located At Horizontal Angle = 15, Vertical Angle = 5

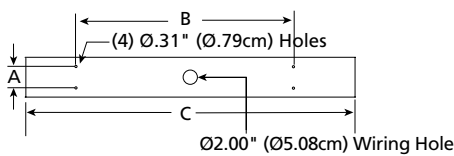
- 1 - Vertical Plane Through Horizontal Angles (15 - 195) (Through Max. Cd.)
- 2 - Horizontal Cone Through Vertical Angle (5) (Through Max. Cd.)

### DIMENSIONAL DATA

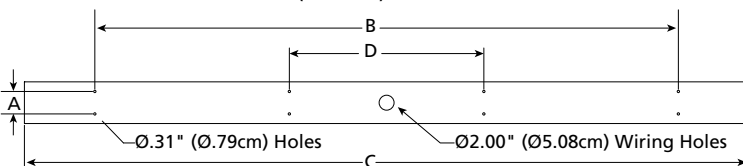
#### CROSS SECTION



#### BASEPLATE



#### 96" (243.84cm) BASEPLATE



#### DIMENSIONAL DATA (IN INCHES & CENTIMETERS)

	A	B	C	D
<b>ES524 – T5</b>	3.00	16.00	23.25	
<b>cm</b>	7.62	40.64	59.06	
<b>ES524 – T8</b>	3.00	16.00	24.75	
<b>cm</b>	7.62	40.64	62.87	
<b>ES536 – T5</b>	3.00	20.00	35.00	
<b>cm</b>	7.62	50.80	88.90	
<b>ES536 – T8</b>	3.00	20.00	36.75	
<b>cm</b>	7.62	50.80	93.35	
<b>ES548 – T5</b>	3.00	32.00	46.75	
<b>cm</b>	7.62	81.28	118.75	
<b>ES548 – T8/LED</b>	3.00	32.00	48.75	
<b>cm</b>	7.62	81.28	123.83	
<b>ES596 – T5</b>	3.00	78.00	92.87	26.00
<b>cm</b>	7.62	198.12	235.89	66.04
<b>ES596 – T8</b>	3.00	78.00	96.83	26.00
<b>cm</b>	7.62	198.12	245.95	66.04



[www.kenall.com](http://www.kenall.com) | P: 800-4-Kenall | F: 262-891-9701 | 10200 55th Street Kenosha, Wisconsin 53144, USA

A brand of **legrand**

This product complies with the Buy American Act: manufactured in the United States with more than 50% of the component cost of US origin. It may be covered by patents found at [www.kenall.com/patents](http://www.kenall.com/patents). Content of specification sheets is subject to change; please consult [www.kenall.com](http://www.kenall.com) for current product details. ©2022 Kenall Mfg. Co.