

MILLENIUM FINITE™

FN6 SERIES

PRODUCT FEATURES:

- » 12" and 24" high-output surface wall-pack
- » Optical distribution options with full cutoff, suitable for path of egress lighting
- » Optional embedded motion sensor
- » Peace of Mind Guarantee® against breakage



PROJECT INFORMATION

Job Name _____

Fixture Type _____

Catalog Number _____

Approved by _____

SPECIFICATIONS

HOUSING: Marine-grade aluminum with extruded body and die-cast end caps. Post-assembly TGIC polyester powder coat finished with 5-step pre-treatment process.

OPTICAL: Type II, III, IV and 5N utilizing secondary optics with a clear UV-stabilized polycarbonate tertiary lens.

LED MODULE: Serviceable high-power LED array. See Ordering Information for available color temperature and CRI options. Maximum 5-step MacAdam variation allowance.

DRIVER: 120-277VAC or 347VAC, 50/60Hz electrical input with serviceable constant-current driver (<20% THD, >0.90 PF). Minimum 85% driver efficiency. Standard 0-10V dimming with 1-100% range and dim-to-dark capabilities; 330 µA maximum source current.

CONTROLS: Optional embedded microwave motion sensor (MS) has factory default settings of 20 minute timeout with 30% dimming. Compatible with Kenall TekLink™ TL100 control system.

INSTALLATION: 16-gauge stainless steel plate attaches to the wall surface (fasteners by others). Luminaire attaches to mounting plate via quick-mount hook and locked into place with a captive Torx® (or optional Phillips) head screws, which are concealed but accessible from the bottom of the luminaire. Suitable for -30°C - 40°C ambient temperature environments, unless otherwise noted.

WARRANTY: Limited five (5) year LED warranty. Peace of Mind Guarantee against breakage.

LISTINGS: Luminaire is certified to UL standards by Intertek Testing Laboratories for Wet Location installations. IP64 rating per IEC60598.



ORDERING INFORMATION (Ex: FN6-12-MW-3-CP-52L-40K8-DV-TL100)

Model	Length	Finish	Optic Type	Lens Type	Lamp Power	Lamp Color	Driver Type	Input Voltage	Options	TekLink	
FN6				CP			DIM1				
Length				Lens Type				Input Voltage			
12	1'			CP	Clear Polycarbonate			DV	120-277VAC, 50/60Hz		
24	2'							347	347VAC (2' length only)		
Finish				Lamp Power				Options			
DB	Dark Bronze			1' Length				LEL* Emergency Battery Backup			
MB	Matte Black			33L	33 Watt LED		(n/a 347V, 2' length only, 42L Lamp Power only, 0°C min.)				
MW	Matte White			52L	52 Watt LED		MS Integral Microwave Occupancy Sensor (n/a 347V)				
CC	Custom Color (Consult Factory)			2' Length				FS Single Fuse & Holder			
Optic Type				42L	42 Watt LED		PH Phillips Head Fasteners				
2	Type II			64L	64 Watt LED		2C Two-Circuit Wiring (2' only, n/a in conjunction with LEL)				
3	Type III			104L	104 Watt LED		TekLink				
4	Type IV			Lamp Color				TL100 TekLink TL100 Control System			
5N	Type 5 Narrow			30K8	3000K/80CRI min						
				35K8	3500K/80CRI min						
				40K8	4000K/80CRI min						
				40K7	4000K/70CRI min						
				50K7	5000K/70CRI min						
				57K7	5700K/70CRI min						
				Driver Type							
				DIM1				0-10V Dimming to 1%			



www.kenall.com | P: 800-4-Kenall | F: 262-891-9700 | 10200 55th Street Kenosha, Wisconsin 53144, USA

A brand of **legrand**

This product complies with the Buy American Act: manufactured in the United States with more than 50% of the component cost of US origin. It may be covered by patents found at www.kenall.com/patents. Content of specification sheets is subject to change; please consult www.kenall.com for current product details. ©2022 Kenall Mfg. Co.

MILLENIUM FINITE™

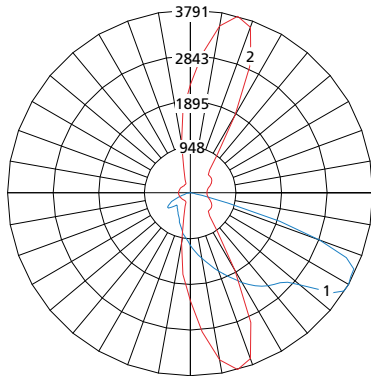
FN6 SERIES

PERFORMANCE

Size	Lamp Code	Initial Delivered Lumens (lm)				Efficacy (lm/W)	Input Power (W)	Drive Current (mA)	Estd. L70 LED Life (hrs)
		Type 2	Type 3	Type 4	Type 5N				
12	33L-30K8	3,562	3,602	3,594	3,734	92 - 96	39	900mA	75,000
	33L-35K8	3,708	3,750	3,741	3,886	96 - 100	39	900mA	75,000
	33L-40K8	3,793	3,836	3,826	3,975	98 - 103	39	900mA	75,000
	33L-40K7	4,203	4,250	4,240	4,405	109 - 114	39	900mA	75,000
	33L-50K7	4,203	4,250	4,240	4,405	109 - 114	39	900mA	75,000
	33L-57K7	4,203	4,250	4,240	4,405	109 - 114	39	900mA	75,000
	52L-30K8	4,821	4,875	4,863	5,053	79 - 83	61	1400mA	60,000
	52L-35K8	5,018	5,074	5,062	5,259	82 - 86	61	1400mA	60,000
	52L-40K8	5,133	5,191	5,178	5,380	84 - 88	61	1400mA	60,000
	52L-40K7	5,688	5,752	5,738	5,962	93 - 98	61	1400mA	60,000
	52L-50K7	5,688	5,752	5,738	5,962	93 - 98	61	1400mA	60,000
	52L-57K7	5,688	5,752	5,738	5,962	93 - 98	61	1400mA	60,000
24	42L-30K8	5,202	5,261	5,248	5,452	106 - 111	49	600mA	90,000
	42L-35K8	5,415	5,476	5,462	5,675	111 - 116	49	600mA	90,000
	42L-40K8	5,539	5,601	5,587	5,805	113 - 118	49	600mA	90,000
	42L-40K7	6,138	6,207	6,191	6,433	125 - 131	49	600mA	90,000
	42L-50K7	6,138	6,207	6,191	6,433	125 - 131	49	600mA	90,000
	42L-57K7	6,138	6,207	6,191	6,433	125 - 131	49	600mA	90,000
	64L-30K8	7,303	7,385	7,367	7,654	94 - 99	77	900mA	75,000
	64L-35K8	7,601	7,687	7,668	7,967	98 - 103	77	900mA	75,000
	64L-40K8	7,776	7,863	7,844	8,150	100 - 105	77	900mA	75,000
	64L-40K7	8,616	8,713	8,692	9,031	111 - 117	77	900mA	75,000
	64L-50K7	8,616	8,713	8,692	9,031	111 - 117	77	900mA	75,000
	64L-57K7	8,616	8,713	8,692	9,031	111 - 117	77	900mA	75,000
	104L-30K8	9,883	9,994	9,969	10,358	81 - 85	122	1400mA	60,000
	104L-35K8	10,287	10,403	10,377	10,782	84 - 88	122	1400mA	60,000
	104L-40K8	10,523	10,641	10,615	11,029	86 - 90	122	1400mA	60,000
	104L-40K7	11,660	11,791	11,762	12,221	96 - 100	122	1400mA	60,000
	104L-50K7	11,660	11,791	11,762	12,221	96 - 100	122	1400mA	60,000
	104L-57K7	11,660	11,791	11,762	12,221	96 - 100	122	1400mA	60,000

Photometry tested to the IESNA LM-79-08 standard by an ILAC/ISO17025 accredited laboratory. For photometric data, please go to www.kenall.com.

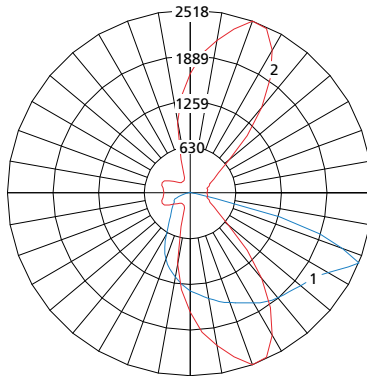
Model: FN6-12-xx-2-CP-52L-30K8-DIM1-yyy



Maximum Candela = 3791 Located At Horizontal Angle = 75, Vertical Angle = 60

1 - Vertical Plane Through Horizontal Angles (75-255) (Through Max. Cd.)
 2 - Horizontal Cone Through Vertical Angle (60) (Through Max. Cd.)

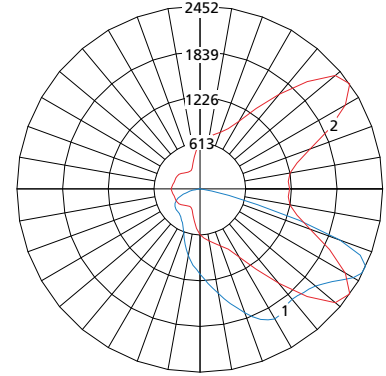
Model: FN6-12-xx-3-CP-52L-30K8-DIM1-yyy



Maximum Candela = 2518 Located At Horizontal Angle = 70, Vertical Angle = 67.5

1 - Vertical Plane Through Horizontal Angles (70-250) (Through Max. Cd.)
 2 - Horizontal Cone Through Vertical Angle (67.5) (Through Max. Cd.)

Model: FN6-12-xx-4-CP-52L-30K8-DIM1-yyy



Maximum Candela = 2452 Located At Horizontal Angle = 35, Vertical Angle = 65

1 - Vertical Plane Through Horizontal Angles (35-215) (Through Max. Cd.)
 2 - Horizontal Cone Through Vertical Angle (65) (Through Max. Cd.)



www.kenall.com | P: 800-4-Kenall | F: 262-891-9700 | 10200 55th Street Kenosha, Wisconsin 53144, USA

A brand of **legrand**

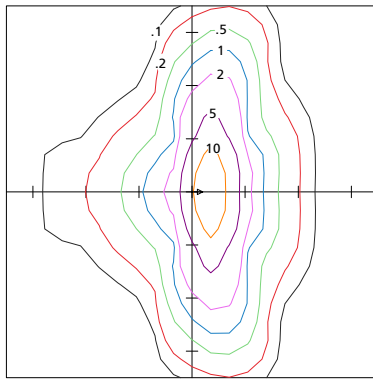
This product complies with the Buy American Act: manufactured in the United States with more than 50% of the component cost of US origin. It may be covered by patents found at www.kenall.com/patents. Content of specification sheets is subject to change; please consult www.kenall.com for current product details. ©2022 Kenall Mfg. Co.

MILLENIUM FINITE™

FN6 SERIES

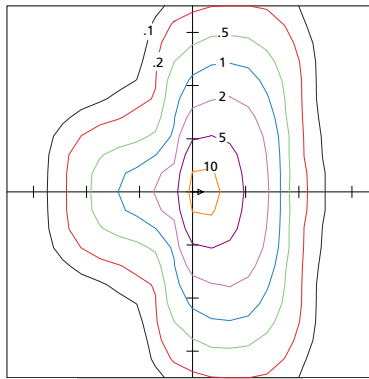
PERFORMANCE

Model: FN6-12-2-33L-40K7



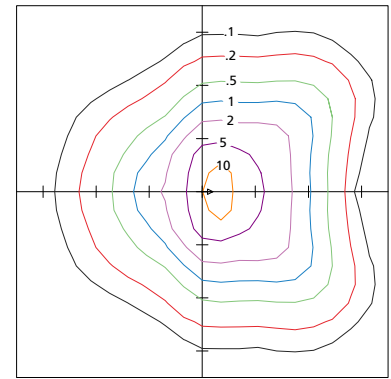
Initial Lumens: 4203
Maximum Horizontal Foot Candles: 16.7

Model: FN6-12-3-33L-40K7



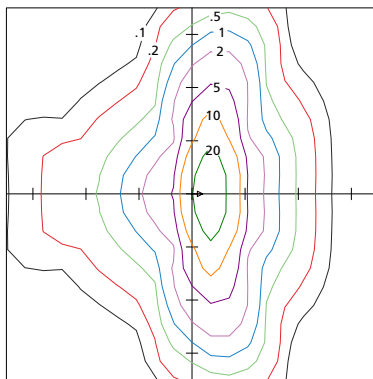
Initial Lumens: 4251
Maximum Horizontal Foot Candles: 12.0

Model: FN6-12-2-33L-40K7



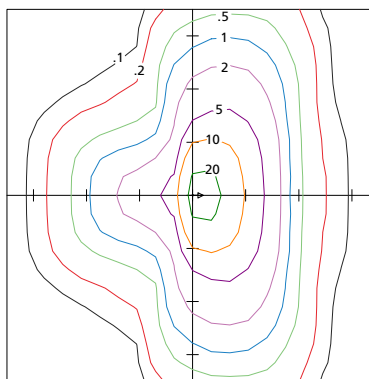
Initial Lumens: 4240
Maximum Horizontal Foot Candles: 13.0

Model: FN6-24-2-64L-40K7



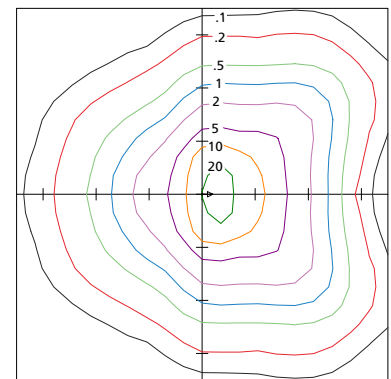
Initial Lumens: 8715
Maximum Horizontal Foot Candles: 24.6

Model: FN6-24-3-64L-40K7



Initial Lumens: 8693
Maximum Horizontal Foot Candles: 26.7

Model: FN6-24-4-64L-40K7



Initial Lumens: 8617
Maximum Horizontal Foot Candles: 34.2

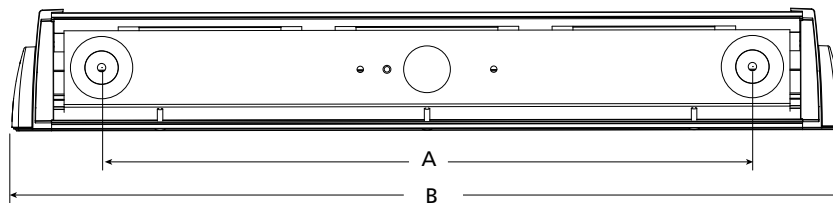
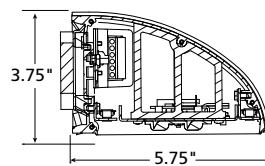
Global Reference Based on 10.0' mounting height. Scale mark units on plots are 10'.

DIMENSIONAL DATA

Nominal Fixture Legend

SIZE (In)	A	B	Weight (lb)
1'	8.00	14.18	9
1' w/ MS	8.00	15.68	9
2'	19.50	24.87	11
2' w/ MS	19.50	26.38	11

CROSS SECTION/DETAILS



www.kenall.com | P: 800-4-Kenall | F: 262-891-9700 | 10200 55th Street Kenosha, Wisconsin 53144, USA

This product complies with the Buy American Act: manufactured in the United States with more than 50% of the component cost of US origin. It may be covered by patents found at www.kenall.com/patents. Content of specification sheets is subject to change; please consult www.kenall.com for current product details. ©2022 Kenall Mfg. Co.

A brand of **legrand**

FN6-040423