

HIGH ABUSE

HASEDI SERIES – LED – INSET DOOR

PRODUCT FEATURES:

- » High-output lamp sources for accurate color rendition and lighting performance
- » Diffused high-efficiency lens for reduced glare
- » Recessed ceiling mount; grid or flange - 1'x4', 2'x2', 2'x4'
- » Suitable for universal installation into 1.0" and 1.5" grid or flange (drywall) ceilings
- » One-piece inset doorframe, secured to housing with continuous piano hinge and Torx® fasteners
- » Peace of Mind Guarantee® against breakage

SPECIFICATIONS

HOUSING: 20-gauge CRS. Hole-free, one-piece, seam-welded construction. Integral aluminum heat sink for thermal dissipation. 18-gauge housing flange with mitered and welded corners. White TGIC polyester powder coat finish – 5-step pre-treatment. Salt spray test: 1,000 hours; Reflectance: 92%.

DOORFRAME: 18-gauge CRS. One-piece inset construction welded corners. White TGIC polyester powder coat – 5-stage pre-treatment. Salt spray test: 1,000 hours; Reflectance: 92%. Lens frame secured to housing with continuous hinge and 3 tamper-resistant stainless steel Torx® with center pin fasteners.

LENS: See Lens Options below to specify lens material. Lens sealed to doorframe with silicone sealant and secured with continuous lens retention system. Lens orientation – smooth side out. Minimum .187" polycarbonate lens required (max. .375") for Peace of Mind Guarantee®.

ELECTRICAL: Available 3000K, 3500K, 4000K and 5000K color temperatures. 120-277VAC and 347VAC, 50/60Hz electrical input with serviceable high power factor electronic, constant-current driver (<20% THD, >0.95 PF). Standard 0-10V dimming with 1-100% range and dim-to-dark capabilities (non dim-to-dark with 347V); 660 µA maximum source current.

SENSOR & CONTROLS: Optional sensor available with compatible third party controls. To see the full list of compatible controls, [click here](#).

INSTALLATION: Adjustable swing-out mounting brackets standard.

PHOTOMETRICS: Photometry tested to the IESNA LM-79-08 standard. For additional photometric data, please go to www.kenall.com

WARRANTY: Limited five (5) year LED warranty. [Peace of Mind Guarantee against breakage](#).

LISTINGS: Luminaire is certified to UL standards by Intertek Testing Laboratory for non-IC and Wet Location installations. ETL certified IP65 per IEC60598. CCEA approved.

PROJECT INFORMATION

Job Name _____

Fixture Type _____

Catalog Number _____

Approved by _____



1'x4'

2'x2'

2'x4'



ORDERING INFORMATION (Ex: HASEDI-24-67L-40K8-DIM1-DV-2F-2H-SYM/9)

Model	Size	Lamp Power	Lamp Color	Driver	Voltage	Doorframe	Housing	Lens Type	Options
HASEDI									
DIM1									
Size		Lamp Power		Driver Type				Options	
14	1'x4'	1'x4'		DIM1	0-10V Dimming to 1%			LEL▲	8.4W Emergency Battery Pack
22	2'x2'	45L†	45 Watt LED					20KV	20KV/KA Surge Protection per IEEE/ANSI C62.41.2 Cat. A
24	2'x4'	67L	67 Watt LED	Voltage				FS	Fuse & Holder
		90L	90 Watt LED	DV	120-277VAC, 50/60Hz			HJ	Sealed Wireway
		2'x2'		120	120VAC			IF*†	Install Frame
		45LD	45 Watt Dual-Row LED	277	277VAC			PF*	Plaster Frame
		67L	67 Watt LED	347	347VAC			RF•	Radio Frequency Filter
		90L	90 Watt LED	Doorframe Options				RM†	Continuous Row Mounting
		2'x4'		2F	18-Ga CRS in Gloss White (STD)			TH	1/2" Trade Size Threaded Hub
		45LD	45 Watt Dual-Row LED	5F	20-Ga Type 304 SS with 4B Brushed Finish			2C	Two Circuit Wiring
		67L	67 Watt LED	Housing/Flange Options					
		90L	90 Watt LED	2H	20-Ga CRS/18-Ga CRS in Gloss White (STD)				
		135L	135 Watt LED	5H5	20-Ga Type 304 SS/18-Ga Type 304 SS with 4B Brushed Finish				
		180L	180 Watt LED	2H5	20-Ga CRS/18-Ga Type 304 SS with 4B Brushed Finish				
		Lamp Color		Lens Type					
		30K8	3000K / 82 CRI min.	6	.187" #12 Prismatic Polycarbonate				
		35K8	3500K / 82 CRI min.	SYM/9	Symmetric, Diffused DR Acrylic inside lens .250" Clear Polycarbonate outside lens				
		40K8	4000K / 82 CRI min.	SL	Specified Lens				
		50K8	5000K / 82 CRI min.						

* Add .375" to ceiling cut out dimensions
 † Only available when installed in drywall ceilings (flange mount)
 • Voltage specific selection required
 ‡ n/a with 2C Option
 ▲ n/a with 180L lamp option or 347V input; voltage-specific selection required and height of fixture is 5.875" when specified with 135L lamp option; 0°C/32°F min. operating environment.



www.kenall.com | P: 800-4-Kenall | F: 262-891-9701 | 10200 55th Street Kenosha, Wisconsin 53144, USA

A brand of **legrand**

This product complies with the Buy American Act: manufactured in the United States with more than 50% of the component cost of US origin. It may be covered by patents found at www.kenall.com/patents. Content of specification sheets is subject to change; please consult www.kenall.com for current product details. ©2022 Kenall Mfg. Co.

HIGH ABUSE
HASEDI SERIES – LED – INSET DOOR

PERFORMANCE		Initial Delivered Lumens		Input Power (W)	Drive Current (mA)	Estd. L70 LED Life (Hrs)
Model	Lamp Type	@ 25°C	Efficacy (lm/W)			
HASEDI14	45L-30K8	4,480	97	46	100	80,000
	45L-35K8	4,633	100			
	45L-40K8	4,776	103			
	45L-50K8	4,967	108			
	67L-30K8	6,862	95	72	75	80,000
	67L-35K8	7,096	99			
	67L-40K8	7,316	102			
	67L-50K8	7,608	106			
	90L-30K8	8,818	90	98	100	60,000
	90L-35K8	9,119	93			
	90L-40K8	9,401	96			
	90L-50K8	9,777	100			
HASEDI22	45LD-30K8	4,633	100	47	100	80,000
	45LD-35K8	4,792	103			
	45LD-40K8	4,940	106			
	45LD-50K8	5,137	110			
	67L-30K8	7,098	99	72	75	80,000
	67L-35K8	7,340	102			
	67L-40K8	7,567	105			
	67L-50K8	7,869	109			
	90L-30K8	9,120	93	98	100	60,000
	90L-35K8	9,431	96			
	90L-40K8	9,723	99			
	90L-50K8	10,112	103			
HASEDI24	45LD-30K8	5,602	123	45	50	100,000
	45LD-35K8	5,793	128			
	45LD-40K8	5,972	132			
	45LD-50K8	6,211	137			
	67L-30K8	8,184	114	72	75	80,000
	67L-35K8	8,464	118			
	67L-40K8	8,725	121			
	67L-50K8	9,074	126			
	90L-30K8	10,517	112	94	100	60,000
	90L-35K8	10,876	116			
	90L-40K8	11,212	120			
	90L-50K8	11,660	125			
	135L-30K8	14,908	101	147	100	60,000
	135L-35K8	15,417	105			
	135L-40K8	15,894	108			
	135L-50K8	16,529	112			
	180L-30K8	20,328	104	196	100	60,000
	180L-35K8	21,022	107			
	180L-40K8	21,672	111			
	180L-50K8	22,539	115			

Provided information includes SYM/9 Lens Type. Information subject to change without notice. Visit www.kenall.com for IES files and additional information.



www.kenall.com | P: 800-4-Kenall | F: 262-891-9701 | 10200 55th Street Kenosha, Wisconsin 53144, USA

A brand of Legrand

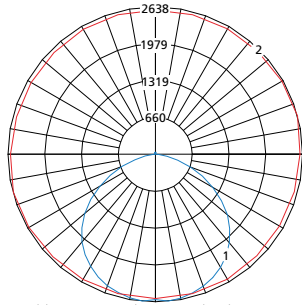
This product complies with the Buy American Act: manufactured in the United States with more than 50% of the component cost of US origin. It may be covered by patents found at www.kenall.com/patents. Content of specification sheets is subject to change; please consult www.kenall.com for current product details. ©2022 Kenall Mfg. Co.

HIGH ABUSE

HASEDI SERIES – TECHNICAL DATA

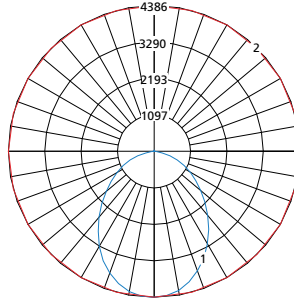
PERFORMANCE

Model: HASEDI-14-67L-40K8-DIM1-DV-2F-2H-SYM



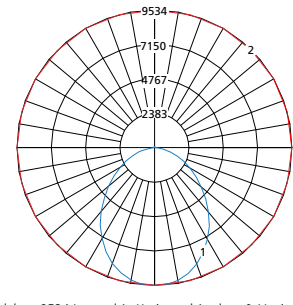
Maximum Candela = 2638 Located At Horizontal Angle = 15, Vertical Angle = 5
 1 - Vertical Plane Through Horizontal Angles (15-195) (Through Max. Cd.)
 2 - Horizontal Cone Through Vertical Angle (5) (Through Max. Cd.)

Model: HASEDI-22-90L-40K8-DIM1-DV-2F-2H-SYM



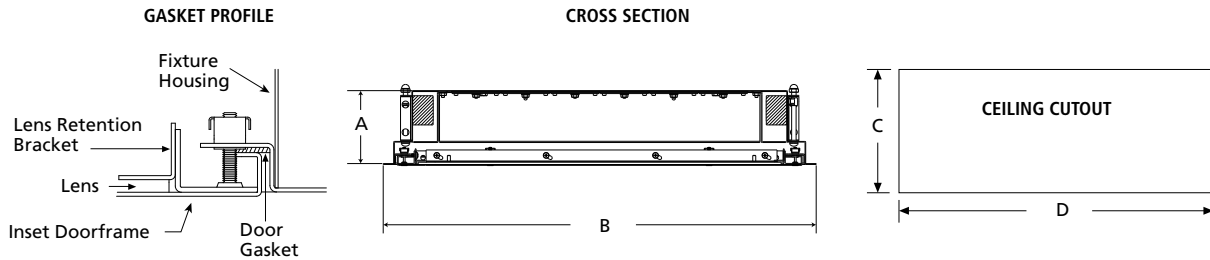
Max Candela = 4386 Located At Horizontal Angle = 0, Vertical Angle = 0
 1 - Vertical Plane Through Horizontal Angles (0 - 180) (Through Max. Cd.)
 2 - Horizontal Cone Through Vertical Angle (0) (Through Max. Cd.)

Model: HASEDI-24-180L-40K8-DIM1-DV-2F-2H-SYM



Max Candela = 9534 Located At Horizontal Angle = 0, Vertical Angle = 5
 1 - Vertical Plane Through Horizontal Angles (0 - 180) (Through Max. Cd.)
 2 - Horizontal Cone Through Vertical Angle (5) (Through Max. Cd.)

DIMENSIONAL DATA



DIMENSIONAL DATA (IN INCHES)

	A	B	C	D
1x4	4.20	11.75 x 47.75	10.85	46.85
2x2	4.20	23.75 x 23.75	22.85	22.85
2x4	4.20	23.75 x 47.75	22.85	46.85

* Add .375" to ceiling cut out dimensions when IF Option is specified

** Height is 5.875" with 135L lamp option when ordered in conjunction with LEL option.



www.kenall.com | P: 800-4-Kenall | F: 262-891-9701 | 10200 55th Street Kenosha, Wisconsin 53144, USA

This product complies with the Buy American Act: manufactured in the United States with more than 50% of the component cost of US origin. It may be covered by patents found at www.kenall.com/patents. Content of specification sheets is subject to change; please consult www.kenall.com for current product details. ©2022 Kenall Mfg. Co.

A brand of **legrand**