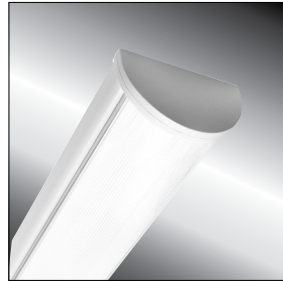


# MILLENNIUM STRETCH™

## MLHA5 SERIES using Indigo-Clean Technology – QUICK SHIP

### PRODUCT FEATURES:

- » Quick Ship ordering options ship in 5 days
- » Provides on-demand environmental disinfection via LED light
- » Single, white disinfection mode
- » Independent laboratory tested to kill harmful bacteria, including Staph\*, such as MRSA\*\*
- » Extruded and die-cast aluminum construction
- » Peace of Mind Guarantee® against breakage



### PROJECT INFORMATION

Job Name \_\_\_\_\_

Fixture Type \_\_\_\_\_

Catalog Number \_\_\_\_\_

Approved by \_\_\_\_\_

### SPECIFICATIONS:

**HOUSING:** Marine grade aluminum. Extruded body with die-cast end caps. Housing, with end caps, post assembly TGIC polyester powder coat finished – 5-step pre-treatment. See Ordering Information for available finishes.

**OPTIC:** High-impact extruded diffuser. Smooth exterior, linear prismatic interior. Nominal thickness .156". Lens securely positioned in body channels and end caps. Lens locked in place with four (4) tamper-resistant stainless steel Torx® with center pin fasteners and sealed with closed cell gaskets. Full reflector/wire cover with 92% reflectivity.

**END CAPS:** Marine grade die-cast aluminum. Conduit and "Wiremold™ ready" knockout visible only from interior of end cap.

**ELECTRICAL:** Serviceable mid-power white and 405nm Indigo LED array. Available 3700K color temperature with 3-step MacAdam variation allowance. Minimum 82 CRI standard. 120-277VAC electrical input with serviceable high power factor electronic, constant-current drivers (<10% THD, >0.90 PF). Minimum 85% driver efficiency. Standard 0-10V dimming with 1-100% range and dim-to-dark capabilities. 165µA maximum source current. Single, white disinfection mode.

**INSTALLATION:** Standard four-point mounting required for Peace of Mind Guarantee®. Suitable for installation into -30°C to 40°C ambient environments, unless otherwise noted.

**PHOTOMETRICS:** Photometry tested to the IESNA LM-79-08 standard by an ILAC/ISO17025 accredited laboratory. For additional photometric data, please go to [www.kenall.com](http://www.kenall.com).

**WARRANTY:** Limited five (5) year LED warranty. Peace of Mind Guarantee against breakage.

**LISTINGS:** Luminaire is certified to UL Standards by Intertek Testing Laboratory for Wet Location – covered ceiling mount. Corner, horizontal wall, vertical wall and pendant mount installation – Damp Location only. ETL certified IP64 in compliance with IEC 60598 – ceiling mount. ADA compliant. EPA Est. No. 99283-WI-1.

\*per independent lab report #SGS-09516076094. Contact Kenall for a copy of this report.

\*\*Antimicrobial Activity of a Continuous Visible Light Disinfection System by Rutala, et. al, ID Week 2016.



### ORDERING INFORMATION (Ex: MLHA5-48-F-MW-FA-55C37K-DCC-DV)

Model	Length	End Cap	Finish	Lens	Lamp Type	Driver Type	Voltage
<b>MLHA5</b>	<b>48</b>	<b>F</b>	<b>MW</b>	<b>FA</b>	<b>55C37K</b>	<b>DCC</b>	<b>DV</b>
	<b>Length</b> 48 4'		<b>Finish</b> MW Matte White			<b>Driver Type</b> DCC 0-10V Dimming Constant Current	
	<b>End Caps</b> F Flat		<b>Lens</b> FA Frosted DR Acrylic			<b>Voltage</b> DV 120-277 Volts, 50/60Hz	
			<b>Lamp Type</b> 55C37K 55 Watt 3700K White & Indigo LED				

Click [HERE](#) for full range of MLHA5 ordering options



www.kenall.com | P: 800-4-Kenall | F: 262-891-9701 | 10200 55th Street Kenosha, Wisconsin 53144, USA

This product complies with the Buy American Act: manufactured in the United States with more than 50% of the component cost of US origin. It may be covered by patents found at [www.kenall.com/patents](http://www.kenall.com/patents). Content of specification sheets is subject to change; please consult [www.kenall.com](http://www.kenall.com) for current product details. ©2019 Kenall Mfg. Co.

A brand of legrand

# MILLENIUM STRETCH™

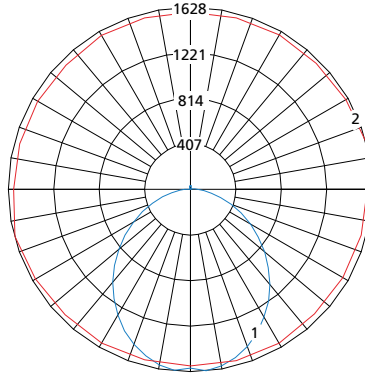
## MLHA5 SERIES using Indigo-Clean Technology – QUICK SHIP

### PERFORMANCE

Lamp Type	Initial Delivered Lumens		Input Power (W)	Drive Current (mA)	Estd. L70 LED Life (Hrs)
	@ 25°C	Efficacy (lm/W)			
55C37K	5,436	86	63	100	80,000

Displayed information above is for FA lens type. Information subject to change without notice. Visit [www.kenall.com](http://www.kenall.com) for IES files and additional information.

Model: MLHA5-48-X-MW-FA-55C37K-DCC-DV

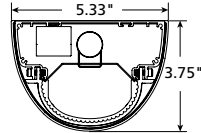


Maximum Candela = 1628 Located At Horizontal Angle = 15, Vertical Angle = 5

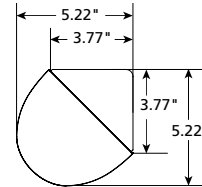
- 1 - Vertical Plane Through Horizontal Angles (15-195) (Through Max. Cd.)
- 2 - Horizontal Cone Through Vertical Angle (5) (Through Max. Cd.)

### DIMENSIONAL DATA

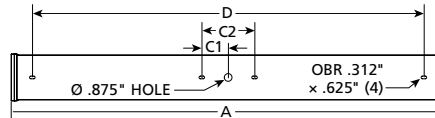
#### CROSS SECTION/DETAILS



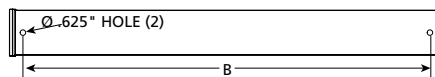
#### CORNER MOUNT BRACKET



#### SURFACE MOUNTING HOLES



#### PM OPTION



#### Nominal Four Foot Fixture Legend

End Cap	A	B	C1	C2	D
F	49.31	46.25	3.00	6.00	44.48

