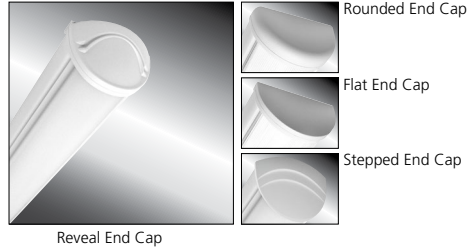


MILLENIUM STRETCH™

MLHA5 SERIES using Indigo-Clean Technology

PRODUCT FEATURES:

- » Provides environmental disinfection and effective, efficient lighting performance via visible LED light
- » Dual-Mode Indigo-Clean Technology is independently tested to kill 94% of SARS CoV-2 and Influenza-A***, in addition to MRSA
- » Single-Mode Indigo-Clean Technology is independently tested to kill harmful bacteria, such as Staph*, including MRSA**
- » Peace of Mind Guarantee® against breakage



PROJECT INFORMATION

Job Name _____

Fixture Type _____

Catalog Number _____

Approved by _____

SPECIFICATIONS

HOUSING: Marine grade aluminum. Extruded body with die-cast end caps. Housing, with end caps, post assembly TGIC polyester powder coat finished – 5-step pre-treatment. See Ordering Information for available finishes.

OPTIC: High-impact extruded diffuser. Smooth exterior, linear prismatic interior. Nominal thickness .156". Lens securely positioned in body channels and end caps. Lens locked in place with four (4) tamper-resistant stainless steel Torx® T-20 with center pin fasteners and sealed with closed cell gaskets. Full reflector/ wire cover with 92% reflectivity.

END CAPS: Marine grade die-cast aluminum. Three styles available: Flat, Rounded and Reveal. Conduit and "Wiremold™" ready™ knockouts visible only from interior of end cap (Flat and Rounded styles only).

ELECTRICAL: (Single- and Dual-Mode ICT) Serviceable mid-power white and 405nm Indigo LED array. Available 3200K, 3700K and 4300K color temperatures with 3-step MacAdam variation allowance. Minimum 82 CRI standard. 120-277VAC and 347VAC electrical input with serviceable high power factor electronic, constant-current drivers (<10% THD, >0.90 PF). Minimum 85% driver efficiency. Standard 0-10V dimming with 1-100% range and dim-to-dark capabilities (non-dim-to-dark on Dual-Mode ICT). 165µA maximum source current. **Single-Mode ICT** provides a single, white disinfection operational mode. **Dual-Mode ICT** provides two operational modes based on room occupancy. White Disinfection Mode is a white LED array for ambient lighting plus a simultaneous low-power 405nm LED array for low-level, continuous and safe environmental disinfection. Indigo Disinfection Mode is a higher-level 405nm array for continuous safe environmental disinfection during periods of room vacancy. The operational mode is determined via internal low-voltage device based upon the input signal provided by an external control device/system, such as the [IC150](#) product. Luminaire dimming is overridden in this operational state. Refer to the [Kenall Dual-Mode ICT Control Application Guide](#) for further description.

INSTALLATION: Standard four-point mounting required for Peace of Mind Guarantee®. Suitable for installation into -30°C to 40°C ambient environments, unless otherwise noted.

PHOTOMETRICS: Photometry tested to the IESNA LM-79-08 standard by an ILAC/ISO17025 accredited laboratory. For additional photometric information, go to [www.kenall.com](#).

WARRANTY: Limited five (5) year LED warranty. [Peace of Mind Guarantee against breakage.](#)

LISTINGS: Luminaire is certified to UL Standards by Intertek Testing Laboratory for Wet Location – covered ceiling mount. ETL certified IP64 in compliance with IEC 60598 – ceiling mount. Corner, horizontal wall and pendant mount installation – damp location only. ADA compliant. EPA Est. No. 99283-WI-1.

*per independent lab report #SGS-09516076094. Contact Kenall for a copy of this report.

**Antimicrobial Activity of a Continuous Visible Light Disinfection System by Rutala, et. al, ID Week 2016.

***Refer to [www.indigo-clean.com](#) for details.



ORDERING INFORMATION (Ex: MLHA5-48-F-MB-FA-23I/55C-37K8-DCC-DV-FS-9500)

Model	Length	End Cap	Finish	Lens	Lamp Power	Lamp Color	Driver Type	Voltage	Options	Accessories
MLHA5	48			FA			DCC			
Length	48 4'		Finish			Driver Type	DCC 0-10V Dimming Constant Current		Options	
End Caps	F Flat R Rounded RV Reveal SP Stepped		LG Light Gray MB Matte Black MW Matte White CC Custom Color (Consult Factory)	Lens FA Frosted DR Acrylic		Voltage DV 120-277 Volts, 50/60Hz 347 347 Volts, 60Hz		LEL† Integral 10W Emergency Battery Backup CDF Captive Diffuser Fasteners DL Damp Location FS Single Fuse & Holder PH Phillips Head Fasteners PM‡ Pendant Mount (Max. 3/8" NPT stems by others; damp only)		
			Lamp Power 55C 55W Single-Mode ICT 23I/55C 55W Dual-Mode ICT					Accessories CMB‡ Corner Mount Bracket (Must be ordered with DL Option)		
			Lamp Color 32K8 3200K / 82 CRI min. 37K8 3700K / 82 CRI min. 43K8 4300K / 82 CRI min.					† 0°C minimum operating temperature, n/a with 347V ‡ PM and CMB not available in conjunction		

ACCESSORIES ORDERED SEPARATELY
IC150 External Room Control System for Dual-Mode ICT Products
[\(click here for Specifications\)](#)

**Click HERE for MLHA5-ICT
'Fast Track' Ordering Options**

Ships in 5 days



www.kenall.com | P: 800-4-Kenall | F: 262-891-9700 | 10200 55th Street Kenosha, Wisconsin 53144, USA

This product complies with the Buy American Act: manufactured in the United States with more than 50% of the component cost of US origin. It may be covered by patents found at [www.kenall.com/patents](#). Content of specification sheets is subject to change; please consult [www.kenall.com](#) for current product details. ©2022 Kenall Mfg. Co.

A brand of **legrand**

MILLENIUM STRETCH™

MLHA5 SERIES – with Indigo-Clean Technology

PERFORMANCE

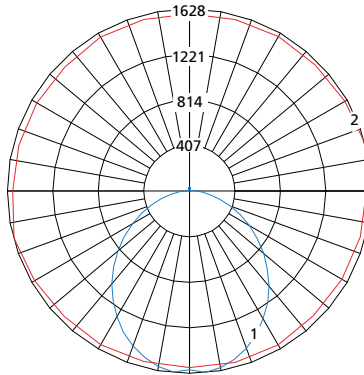
Technology	Length	Lamp Code	Lumen Output by Color (lm) ¹			Efficacy (lm/W)	Power Consumption ²			Estd L70 LED Life (Hrs)
			32K8	37K8	43K8		Occupied (W)	LPD (W)	Unoccupied (W)	
Single-Mode ICT	4'	55C	5,298	5,436	5,491	87 - 90	61	51	n/a	80,000
Dual-Mode ICT	4'	23I/55C	5,298	5,436	5,491	87 - 90	61	51	29	80,000

¹Provided values are applicable to the FA lens Type. Information subject to change without notice. Visit www.kenall.com for IES files and additional information.

²Lighting Power and Energy Calculations:

- Use **Occupied Power** for total electrical load calculations. Use this value to estimate branch circuit lighting loads.
- Use **LPD Power** for lighting power density calculations. Only the power attributed to white light is required per NEMA LSD EB 84-202X. Power used toward germicidal disinfection has been removed for this calculation.
- Use **Unoccupied** and **Occupied Power** for Energy calculations to determine the power consumed over time based on the use of the space.

Model: MLHA5-48-X-MW-FA-55C-37K8-DCC-DV and MLHA5-48-X-MW-FA-23I/55C-37K8-DCC-DV

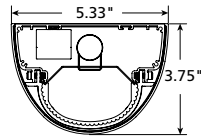


Maximum Candela = 1628 Located At Horizontal Angle = 15, Vertical Angle = 5

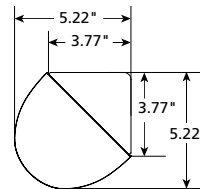
- 1 - Vertical Plane Through Horizontal Angles (15-195) (Through Max. Cd.)
- 2 - Horizontal Cone Through Vertical Angle (5) (Through Max. Cd.)

DIMENSIONAL DATA

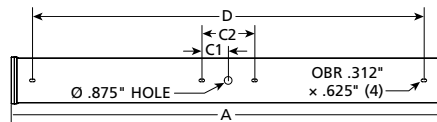
CROSS SECTION/DETAILS



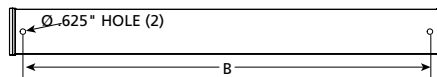
CORNER MOUNT BRACKET



SURFACE MOUNTING HOLES



PM OPTION



Nominal Four Foot Fixture Legend					
End Cap	A	B	C1	C2	D
R	50.52	46.25	3.00	6.00	44.48
F	49.31	46.25	3.00	6.00	44.48
SP	52.13	46.25	3.00	6.00	44.48
RV	51.67	46.25	3.00	6.00	44.48

