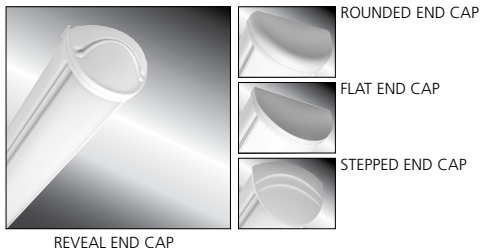


# MILLENIUM STRETCH™

## MLHA5 SERIES - TUNABLE WHITE LED

### PRODUCT FEATURES:

- » High-output, high CRI LED lamp sources with 2700K-6500K white tuning capability
- » Extruded and die-cast aluminum construction
- » Peace of Mind Guarantee® against breakage



PROJECT INFORMATION	
Job Name	_____
Fixture Type	_____
Catalog Number	_____
Approved by	_____

### SPECIFICATIONS:

**HOUSING:** Marine grade aluminum. Extruded body with die-cast end caps. Housing, with end caps, post assembly TGIC polyester powder coat finished – 5-step pre-treatment. See Ordering Information for available finishes.

**END CAPS:** Marine grade die-cast aluminum. Four styles available: Flat, Rounded, Reveal and Stepped. Conduit and "Wiremold™" ready" knockout visible only from interior of end cap (For Flat and Rounded styles only).

**OPTIC:** UV-stabilized, high-impact extruded pearlescent polycarbonate. Smooth exterior, linear prismatic interior. Nominal thickness .156". Lens securely positioned in body channels and end caps. Lens locked in place with four (4) tamper-resistant stainless steel Torx® T-20 with center pin fasteners and sealed with closed cell gaskets. Full reflector/wire cover with 92% reflectivity.

**LED MODULE:** Serviceable tunable-white, mid-power LED array provides 2700K through 6500K CCT range with a two-point path. Minimum 82 CRI standard (R9 >20) with optional minimum 90 CRI (R9 >50).

**DRIVER:** 120-277VAC, 50/60Hz electrical input (PF ≥ 0.9, THD < 20%). Minimum 85% electrical efficiency. Serviceable, constant-current multi-channel programmable driver with dual analog (0-10V) control inputs for intensity and CCT. Optional DALI (Type 8) driver. Logarithmic intensity profile with 0.1-100% range, with dim-to-dark capabilities. Linear profile on CCT adjustment. Refer to charts on page 2 for further details.

**INSTALLATION:** Standard four-point mounting required for Peace of Mind Guarantee®. Suitable for installation into -30°C to 40°C ambient environments, unless otherwise noted.

**PHOTOMETRICS:** Photometry tested to the IESNA LM-79-08 standard by an ILAC/ISO17025 accredited laboratory. For additional photometric data, please go to [www.kenall.com](http://www.kenall.com).

**WARRANTY:** Limited ten (10) year warranty for LED Lamps. Peace of Mind Guarantee against breakage.

**LISTINGS:** Luminaire is certified to UL Standards by Intertek Testing Laboratory for Wet Location – covered ceiling mount. Corner, horizontal wall, vertical wall and pendant mount installation – damp location only. ETL certified IP64 in compliance with IEC 60598 – ceiling mount. ADA compliant.



### ORDERING INFORMATION (Ex: MLHA5-48-R-MW-PP-45T-27/65K8-ATW-DV-FS)

Model	Length	End Cap	Finish	Lens	Lamp Power	Lamp Color	Driver Type	Voltage	Options	Accessories
<b>MLHA5</b>	<b>48</b>			<b>PP</b>	<b>45T</b>					
	<b>Length</b> 48 4'			<b>Lens Type</b> PP Pearlescent Polycarbonate				<b>Input Voltage</b> DV 120-277 Volts, 50/60Hz		
	<b>End Caps</b> F Flat R Rounded RV Reveal SP Stepped			<b>Lamp Power</b> 45T 45W Tunable White				<b>Options</b> LEL Integral 10W Emergency Battery Backup (0°C minimum operating temperature) CDF Captive Diffuser Fasteners DL Damp Location FS Single Fuse & Holder PH Phillips Head Fasteners PM§ Pendant Mount (Max. 3/8NPT stems by others; damp only)		
	<b>Finish</b> LG Light Gray MB Matte Black MW Matte White CC Custom Color (Consult Factory)			<b>Lamp Color</b> 27/65K8 2700-6500K CCT Range (82 CRI min) 27/65K9 2700-6500K CCT Range (92 CRI min)				<b>Accessories</b> CMB§ Corner Mount Bracket (Must be ordered with DL Option)		
				<b>Driver Type</b> ATW Analog (0-10V) Dimming Tunable White Driver DTW DALI Tunable White Driver DMX DMX Tunable White Driver (Consult Factory)						

§ PM and CMB not available in conjunction



www.kenall.com | P: 800-4-Kenall | F: 262-891-9700 | 10200 55th Street Kenosha, Wisconsin 53144, USA

This product complies with the Buy American Act: manufactured in the United States with more than 50% of the component cost of US origin. It may be covered by patents found at [www.kenall.com/patents](http://www.kenall.com/patents). Content of specification sheets is subject to change; please consult [www.kenall.com](http://www.kenall.com) for current product details. ©2022 Kenall Mfg. Co.

A brand of legrand

# MILLENIUM STRETCH™

## MLHA5 SERIES - TUNABLE WHITE LED

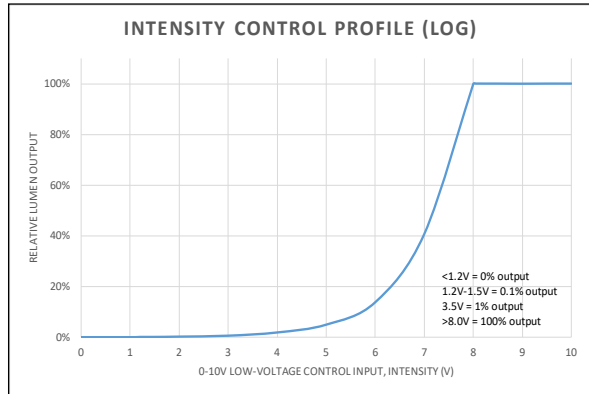
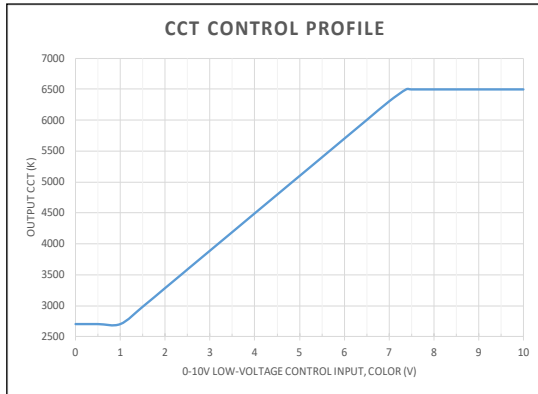
Lamp Type	Performance at 4000K Tuning			
	Lumen Output (lm)	Efficacy (lm/W)	Input Power (W)	Estd. L70 LED Life (Hrs)
45T-27/65K8	4,808	105	46	80,000
45T-27/65K9	3,875	84	46	80,000

Information subject to change without notice. Visit [www.kenall.com](http://www.kenall.com) for ies files additional information.

### PERFORMANCE SCALING, BY LAMP COLOR

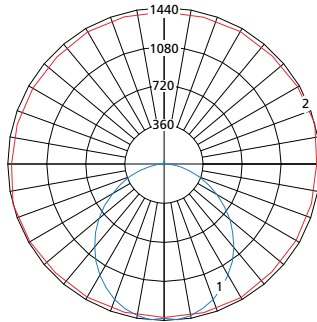
CCT (K)	27/65K8					27/65K9				
	LUMEN SCALE FACTOR	Ra	R9	Rf	Rg	LUMEN SCALE FACTOR	Ra	R9	Rf	Rg
2700	0.92	83	10	83	97	0.95	92	57	89	98
3000	0.95	84	15	83	98	0.97	94	70	91	99
3500	0.99	86	23	84	98	0.99	95	77	92	99
4000	1.00	86	26	84	98	1.00	96	83	92	99
4600	1.00	86	28	84	98	1.00	96	90	92	100
5000	1.01	86	25	83	98	1.01	96	96	91	101
5700	0.99	85	23	82	98	0.99	96	96	91	100
6500	0.99	84	16	82	96	0.99	96	96	90	100

### CCT AND INTENSITY ADJUSTMENT PROFILE - ATW DRIVER TYPE



NOTE: The provided information is the typical expected performance of a single luminaire. Additional luminaires on the same 0-10V line may result in different control profiles. Fine tuning of system performance should be completed after installation is complete. To avoid CCT shift between luminaires, care should be taken to minimize voltage drop on the CCT control line. It is recommended to limit the load on the CCT control circuit to twenty (20) 45T or ten (10) 67T/90T luminaires or less.

Model: MLHA5-48-F-MW-PP-45T-27/65K8-ATW-DV



Maximum Candela = 1440 Located At Horizontal Angle = 15, Vertical Angle = 5

- 1 - Vertical Plane Through Horizontal Angles (15-195) (Through Max. Cd.)
- 2 - Horizontal Cone Through Vertical Angle (5) (Through Max. Cd.)



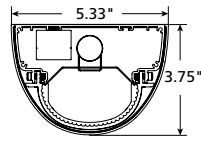
[www.kenall.com](http://www.kenall.com) | P: 800-4-Kenall | F: 262-891-9700 | 10200 55th Street Kenosha, Wisconsin 53144, USA

This product complies with the Buy American Act: manufactured in the United States with more than 50% of the component cost of US origin. It may be covered by patents found at [www.kenall.com/patents](http://www.kenall.com/patents). Content of specification sheets is subject to change; please consult [www.kenall.com](http://www.kenall.com) for current product details. ©2022 Kenall Mfg. Co.

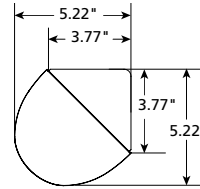
A brand of Legrand

**MILLENIUM STRETCH™**  
**MLHA5 SERIES - TUNABLE WHITE LED**  
**DIMENSIONAL DATA**

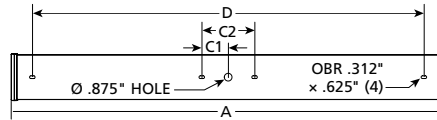
**CROSS SECTION/DETAILS**



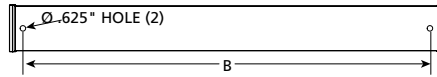
**CORNER MOUNT BRACKET**



**SURFACE MOUNTING HOLES**



**PM OPTION**



Nominal Four Foot Fixture Legend					
End Cap	A	B	C1	C2	D
R	50.52	46.25	3.00	6.00	44.48
F	49.31	46.25	3.00	6.00	44.48
SP	52.13	46.25	3.00	6.00	44.48
RV	51.67	46.25	3.00	6.00	44.48



www.kenall.com | P: 800-4-Kenall | F: 262-891-9700 | 10200 55th Street Kenosha, Wisconsin 53144, USA

A brand of **legrand**

This product complies with the Buy American Act: manufactured in the United States with more than 50% of the component cost of US origin. It may be covered by patents found at www.kenall.com/patents. Content of specification sheets is subject to change; please consult www.kenall.com for current product details. ©2022 Kenall Mfg. Co.