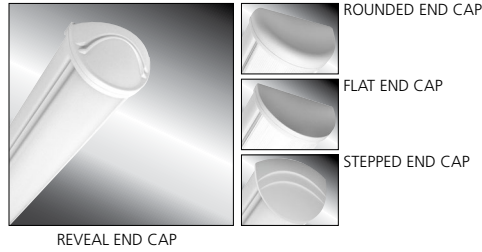


MILLENIUM STRETCH™

MLHA5 SERIES – CONTINUOUS ROW

PRODUCT FEATURES:

- » Surface mount – ceiling or wall; 5" x 48"
- » Extruded aluminum housing with decorative end caps
- » Low-profile – ADA compliant
- » Peace of Mind Guarantee® against breakage



PROJECT INFORMATION

Job Name _____

Fixture Type _____

Catalog Number _____

Approved by _____

SPECIFICATIONS

HOUSING: Marine grade aluminum. Extruded body with die-cast end caps. Housing, with end caps, post assembly TGIC polyester powder coat finished – 5-step pre-treatment. See Ordering Information for standard, optional, architectural and custom finishes. Each linear run of luminaires consists of one Beginning of Run Luminaire (B), one or multiple Middle Luminaire(s) (M), and one End of Run Luminaire (E). Specify and/or order systems per linear run (i.e. (1)B48, (5)M48, (1)E48). NOTE: Contact factory for custom lengths.

REFLECTOR: Full reflector/wire cover – 92% reflectivity.

LENS: UV-stabilized, high impact extruded pearlescent polycarbonate. Smooth exterior, linear prismatic interior. Nominal thickness .156". Lens securely positioned in body channels and end caps. Lens locked in place with tamper-resistant stainless steel Torx® T-20 with center pin fasteners and sealed with closed cell gaskets.

END CAPS/JOINER BANDS: Marine grade die-cast aluminum. Four end cap styles available: Flat, Rounded, Reveal and Stepped. Conduit/Wiremold™ knockout visible only from interior of end cap (for Flat and Rounded styles only).

HARDWARE: Four stainless steel, tamper-resistant Torx® with center pin fasteners secure lens in housing body's lens channel.

ELECTRICAL: Available 3500K, 4000K and 5000K color temperatures, 82 CRI. 120-277VAC and 347VAC, 50/60Hz electrical input with serviceable high power factor electronic, constant-current driver (<20% THD, >0.95 PF). Standard 0-10V dimming with 1-100% range and dim-to-dark capabilities; maximum driver source of 165µA. Consult factory for fluorescent options.

SENSOR & CONTROLS: Optional sensor available with compatible third party controls. To see the full list of compatible controls, [click here](#).

INSTALLATION: Standard four-point mounting per fixture required for Peace of Mind Guarantee®.

PHOTOMETRICS: Photometry tested to the IESNA LM-79-08 standard by an ILAC/ISO17025 accredited laboratory. For additional photometric data, please go to www.kenall.com.

WARRANTY: limited ten (10) year LED warranty. Peace of Mind Guarantee against breakage.

LISTINGS: Luminaire is certified to UL standards by Intertek Testing Laboratories for non-IC and Wet Location installations. IP64 rating per IEC60598 – ceiling mount. Corner, horizontal wall, vertical wall and pendant mount installation – damp location only. ADA compliant.



ORDERING INFORMATION (Ex: MLHA55-B48-2/M48-E48-R-MW-PP-45L40K-DCC-120-FS)

Model	Begin. Hsg.	Mid. Hsg.	End. Hsg.	End Cap	Finish	Lens	Lamp Type	Driver	Voltage	Options
MLHA55	B48	/M48	E48							
Beginning of Run Housing Style				Finish			Driver Type			
B48	Nominal 48" housing			MW	Matte White		DCC Dimming Constant Current			
Middle Fixture(s) Housing Style				MB Matte Black			Voltage			
(replace "x" with qty)				LG Light Gray			120 120 Volts			
(x)/M48	Nominal 48" housing(s)			CC Custom Color (Consult Factory)			277 277 Volts			
Ending of Run Housing Style				PP Pearlescent Polycarbonate			347 347 Volts			
E48	Nominal 48" housing						DV 120-277 Volts			
End Caps				Lamp Type			Options			
R	Rounded			45L35K	45 Watt 3500K LED		LEL Integral 10W Emergency Battery Backup			
F	Flat			45L40K	45 Watt 4000K LED		(0°C minimum operating temperature, n/a with 347V)			
RV	Reveal			45L50K	45 Watt 5000K LED		CDF Captive Diffuser Fasteners			
SP	Stepped						DL Damp Location (Interior use NO gasketing)			
							FS Single Fuse & Holder			
							NAT Natatorium Environment Option			
							PH Phillips Head Fasteners			
							PM§ Pendant Mount (Max. 3/8NPT stems by others; damp only)			
							Accessories			
							CMB§ Corner Mount Bracket (Must be ordered with DL Option)			

§ PM and CMB not available in conjunction



www.kenall.com | P: 800-4-Kenall | F: 262-891-9700 | 10200 55th Street Kenosha, Wisconsin 53144, USA

This product complies with the Buy American Act: manufactured in the United States with more than 50% of the component cost of US origin. It may be covered by patents found at www.kenall.com/patents. Content of specification sheets is subject to change; please consult www.kenall.com for current product details. ©2022 Kenall Mfg. Co.

A brand of **legrand**

MILLENNIUM STRETCH™

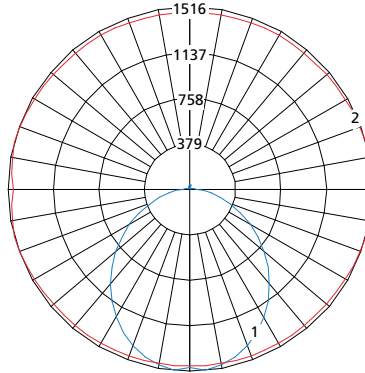
MLHA5 SERIES – CONTINUOUS ROW

PERFORMANCE

Lamp Type	Initial Delivered Lumens		Input Power (W)	Drive Current (mA)	Estd. L70 LED Life (Hrs)
	@ 25°C	Efficacy (lm/W)			
45L35K	4,748	97	49	100	150,000
45L40K	5,062	103	49	100	150,000
45L50K	5,062	103	49	100	150,000

Displayed information is for selected luminaires only. Additional wattages and color temperatures are also available. Visit www.kenall.com for additional information.

Model: MLHA5-48-F-MW-PP-1-45L40K-DCC-1-DV

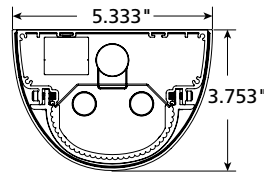


Maximum Candela = 1516 Located At Horizontal Angle = 15, Vertical Angle = 5

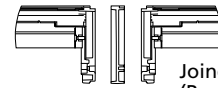
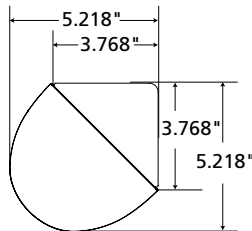
- 1 - Vertical Plane Through Horizontal Angles (15-195) (Through Max. Cd.)
- 2 - Horizontal Cone Through Vertical Angle (5) (Through Max. Cd.)

DIMENSIONAL DATA

CROSS SECTION/DETAILS

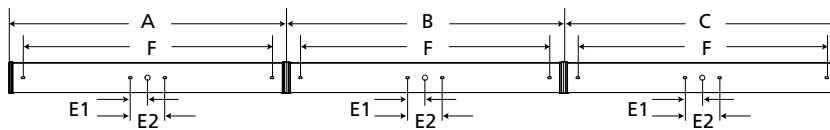


CORNER MOUNT BRACKET

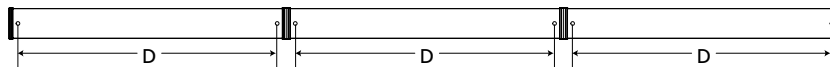


Joiner Band
(Required for row mounting - supplied)

SURFACE MOUNTING HOLES



PM OPTION



Nominal Four Foot Fixture Legend

End Cap	A	B	C	D	E1	E2	F
R	49.930	49.336	49.930	46.250	3.000	6.000	44.480
F	49.322	49.336	49.322	46.250	3.000	6.000	44.480
SP	50.734	49.336	50.734	46.250	3.000	6.000	44.480
RV	50.505	49.336	50.505	46.250	3.000	6.000	44.480



www.kenall.com | P: 800-4-Kenall | F: 262-891-9700 | 10200 55th Street Kenosha, Wisconsin 53144, USA

This product complies with the Buy American Act: manufactured in the United States with more than 50% of the component cost of US origin. It may be covered by patents found at www.kenall.com/patents. Content of specification sheets is subject to change; please consult www.kenall.com for current product details. ©2022 Kenall Mfg. Co.

A brand of **legrand**