

RANGER™

R8 SERIES

PRODUCT FEATURES:

- » Surface mount – ceiling or wall; nominal 8" x 24", 8" x 48"
- » 20-gauge cold rolled steel baseplate with one-piece extruded clear prismatic acrylic lens
- » ADA compliant



PROJECT INFORMATION

Job Name _____

Fixture Type _____

Catalog Number _____

Approved by _____

SPECIFICATIONS

HOUSING: One-piece 20-gauge CRS baseplate and end caps. Baseplate provided with four-point (2 and 3 foot), six-point (4 foot) and eight-point (6 foot) mounting holes and one wireway hole – see Cross Section/Details. White TGIC polyester powder coat – 5-stage pre-treatment. Salt spray test: 1,000 hours; Reflectance: 92%. Baseplate/end caps mount flush to ceiling or wall surface.

LENS: Positioned in baseplate channels and retained with two white nylon fasteners. One-piece extruded clear prismatic impact blend acrylic lens.

SOCKETS: Shock-resistant sockets with internal locking collar to ensure positive lamp retention.

HARDWARE: Two white nylon fasteners secure lens in baseplate channel.

ELECTRICAL: Available 3000K, 3500K, 4000K and 5000K color temperatures, 82 CRI. 120-277VAC and 347VAC, 50/60Hz electrical input with serviceable high power factor electronic, constant-current driver (<20% THD, >0.95 PF). Standard 0-10V dimming with 1-100% range and dim-to-dark capabilities (non dim-to-dark with 347V). Maximum driver source of 330 µA. Constult factory for fluorescent option.

SENSOR & CONTROLS: Optional sensor available with compatible third party controls. To see the full list of compatible controls, [click here](#).

INSTALLATION: Four-point (2 and 3 foot), six-point (4 foot) and eight-point (6 foot) mounting required for One Year Guarantee.

WARRANTY: Limited five (5) year warranty for LED lamps.

LISTINGS: UL and CUL listed for Damp Locations – wall and ceiling mount. See WL Option for Wet Locations, covered ceilings only. ADA Compliant.



ORDERING INFORMATION (Ex: R8-48-67L40K-DCC-1-DV)

Model	Nom Length	Lamp Qty	Lamp Type	Ballast/Driver Type	Ballast/Driver Qty	Voltage	Options	
R8								
Nominal Length		Lamp Type		Ballast/Driver Type		Options		
24	2	2' Lengths		IS	Instant Start Electronic <10% THD (T8, T8HO)		EL†	One-Lamp Indoor Battery Pack (32°F)
48	4'	17 F17T8		RS	Rapid Start Electronic <10% THD (T8, T8HO, T5, T5HO)		AL	Marine Grade Aluminum Housing
Lamp Quantity†		4' Lengths		SB	Specified Ballast		PSS	Painted Stainless Steel Housing
2	Two Lamps	45L30K 45 Watt 3000K LED		DCC	0-10V Dimming LED Driver (LED only)		BSS	Brushed Stainless Steel Housing
		45L35K 45 Watt 3500K LED		Ballast/Driver Quantity			.156	.156" P12 Polycarbonate Lens
		45L40K 45 Watt 4000K LED		1	One		.187	.187" P12 Polycarbonate Lens
		45L50K 45 Watt 5000K LED		2†	Two		FS	Single Fuse & Holder
		67L30K 67 Watt 3000K LED		Voltage			KO	Two 1/2" EMT Conduit Entry Knockouts (one per end cap)
		67L35K 67 Watt 3500K LED		120	120 Volt		PM	Pendant Mount (stems by others; damp only)
		67L40K 67 Watt 4000K LED		277	277 Volt		TR	Torx® T-20 with center pin fasteners
		67L50K 67 Watt 5000K LED		347	347 Volt		WL	Wet Location Rating (covered ceiling only)
		28 F28T5		DV	120-277 Volts			
		32 F32T8						
		54 F54T5HO						

† n/a with LED



www.kenall.com | P: 800-4-Kenall | F: 262-891-9701 | 10200 55th Street Kenosha, Wisconsin 53144, USA

A brand of **legrand**

This product complies with the Buy American Act: manufactured in the United States with more than 50% of the component cost of US origin. It may be covered by patents found at www.kenall.com/patents. Content of specification sheets is subject to change; please consult www.kenall.com for current product details. ©2022 Kenall Mfg. Co.

RANGER™

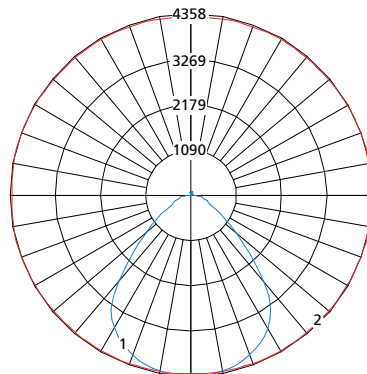
R8 SERIES

PERFORMANCE

Lamp Type	Initial Delivered Lumens		Input Power (W)	Drive Current (mA)	Estd. L70 LED Life (Hrs)
	@ 25°C (lm)	Efficacy (lm/W)			
45L30K	5,771	120	48	100	80,000
45L35K	5,949	124	48	100	80,000
45L40K	6,152	128	48	100	80,000
45L50K	6,573	137	48	100	80,000
67L30K	8,815	122	72	75	80,000
67L35K	9,088	126	72	75	80,000
67L40K	9,398	131	72	75	80,000
67L50K	10,041	139	72	75	80,000

Information subject to change without notice. Photometry tested to the IESNA LM-79-08 standard by an ILAC/ISO17025 accredited laboratory. For photometric data, please go to www.kenall.com

Model: R8-48-67L40K-DCC-1-DV

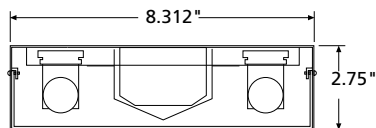


Maximum Candela = 4358 Located At Horizontal Angle = 15, Vertical Angle = 2.5

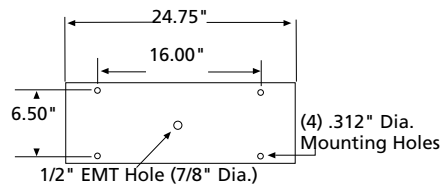
- 1 - Vertical Plane Through Horizontal Angles (15-195) (Through Max. Cd.)
- 2 - Horizontal Cone Through Vertical Angle (2.5) (Through Max. Cd.)

DIMENSIONAL DATA

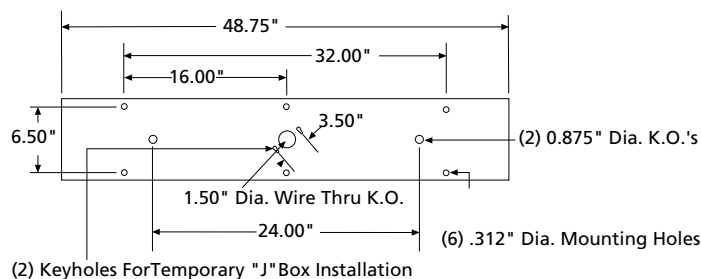
CROSS SECTION



BASEPLATE – 2'



BASEPLATE – 4'



www.kenall.com | P: 800-4-Kenall | F: 262-891-9701 | 10200 55th Street Kenosha, Wisconsin 53144, USA

This product complies with the Buy American Act: manufactured in the United States with more than 50% of the component cost of US origin. It may be covered by patents found at www.kenall.com/patents. Content of specification sheets is subject to change; please consult www.kenall.com for current product details. ©2022 Kenall Mfg. Co.

A brand of **Legrand**