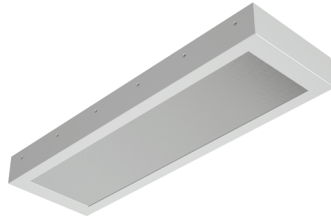


# MIGHTY MAC™

## SCB SERIES

### PRODUCT FEATURES:

- » Surface ceiling mount – 16"×24", 16"×48"
- » TIG welded housing with no post grinding for additional strength
- » Vertically adjustable Z bracket with thru-studs spaced 6" apart
- » Full length concealed internal piano hinge



### PROJECT INFORMATION

Job Name \_\_\_\_\_

Fixture Type \_\_\_\_\_

Catalog Number \_\_\_\_\_

Approved by \_\_\_\_\_

### SPECIFICATIONS

**HOUSING:** One-piece die-formed prime grade material as specified – see ordering information. Corners continuously seam welded and smooth with no post grinding (TIG). Clamshell housing resistant to penetration and contraband concealment.

**BASEPLATE:** Prime grade material as specified – see ordering information. Die-formed blade trap (1/4" (.64cm) minimum) prevents contraband concealment and access. Embossed standoffs prevent distortion.

**LENS:** As specified – maximum thickness .875" – see ordering information. Kenall recommends a prismatic inner lens and a clear outer lens. Two clear lenses used in combination cannot be provided.

**LENS RETENTION:** Vertically adjustable continuous "Z" brackets of prime grade material, secured to housing via thru-studs (6" maximum spacing).

**HINGE:** Full length continuous heavy gauge internal piano hinge (1/2" knuckle/1/8" diameter pin) standard. Pin secured to knuckle. Hinge welded to housing and mounts to baseplate via keyholes.

**FASTENERS:** Hardened security screws as specified – see ordering information. Fully recessed.

**FINISH:** TGIC polyester powder coat – 5-stage pre-treatment. Salt spray test: 1,000 hours; Reflectance: 92%.

**LAMPS:** Quantity and type as specified – see ordering information. Lamps supplied by others.

**BALLAST:** Quantity and type as specified – see ordering information. All ballasts UL listed class P. Optional removable reflector/lamp/ballast tray with quick disconnect.

**LUMINOUS SEAL:** Polyurethane foam prevents light leaks from luminaire base.

**INSTALLATION:** Fixture not suitable for Surface Conduit or Continuous Row Mounting.

**PHOTOMETRICS:** Efficiency of SCB4-0/0-332-IS-1-120-1/B-1 = 63.5%. For photometric information, go to [www.kenall.com](http://www.kenall.com).

**WARRANTY:** 1 Year Warranty for Kenall fluorescent lighting products

**LISTINGS:** UL and CUL listed for damp locations.



### ORDERING INFORMATION (Ex: SCB-2-0/0-2-17-IS-1-120-1/B-1)

Model	Size	Housing/Base	Lamp Qty	Lamp Type	Ballast Type	Ballast Qty	Voltage	Lens (Inner/Outer)	Fasteners	Options
<b>SCB</b>										
<b>Nominal Size</b>			<b>Lamp Quantity</b>		<b>Ballast Quantity</b>			<b>Fastener</b>		
2	16"×24"		2	Two	1	One		1	Torx® T-20 Head w/ Center Pin	
4	16"×48"		3	Three	2	Two		2	Allen Head w/ Center Pin	
			4	Four						
<b>Housing/Base Material</b>			<b>Lamp Type</b>		<b>Voltage</b>			<b>Options</b>		
0	14-Ga CRS (Painted White)		<b>2' Nominal Length</b>		120	120 Volts	<b>EL</b> Standard Lumen EL Pack			
1	16-Ga CRS (Painted White)		17 F17T8		277	277 Volts	<b>PEL</b> High Lumen EL Pack			
3	14-Ga SS (Painted White)		<b>4' Nominal Length</b>		347	347 Volts	<b>SEL</b> Specified EL Pack			
4	16-Ga SS (Painted White)		32 F32T8		<b>Lens (Inner/Outer)‡</b>			<b>DLN</b> LED Night Light w/Light Level Control (100% - 20%; voltage-specific selection required)		
6*	14-Ga SS (Brushed)		<b>Ballast Type</b>		0	No Lens	1	.125" Prismatic Acrylic	<b>FS</b> Single Fuse & Holder	
7*	16-Ga SS (Brushed)		<b>IS</b> Instant Start Electronic <10% THD (T8)		1	.125" Prismatic Polycarbonate	2	.125" Textured Polycarbonate	<b>RGT</b> Removable Gear Tray	
9	12-Ga CRS (Painted White)		<b>RS</b> Rapid Start Electronic <10% THD (CFL, T8)		3	.125" Clear Polycarbonate	G	.125" Clear Polycarbonate	<b>SK</b> Speaker Housing Extension	
			<b>SB</b> Specified Ballast		4	.156" Prismatic Polycarbonate	4	.156" Prismatic Polycarbonate	<b>UV</b> Ultraviolet Filter	
					TG	.250" Textured Tempered Glass	6	.187" Prismatic Polycarbonate	*n/a as Base Material	
					6	.187" Clear Polycarbonate	7	.187" Clear Polycarbonate	‡Refer to lens specifications	
					7	.187" Clear Polycarbonate	8	.187" Clear Tempered Glass		
					8	.187" Clear Tempered Glass	9	.250" Clear Polycarbonate		
					9	.250" Clear Polycarbonate	A	.250" Clear Tempered Glass		
					A	.250" Clear Tempered Glass	B	.375" Clear Polycarbonate		
					B	.375" Clear Polycarbonate	C	.375" Clear Tempered Glass		
					C	.375" Clear Tempered Glass	J	.500" Clear Polycarbonate		
					J	.500" Clear Polycarbonate	P	.500" Clear Tempered Glass		
					P	.500" Clear Tempered Glass	N	.750" Clear Tempered Glass		
					N	.750" Clear Tempered Glass				



[www.kenall.com](http://www.kenall.com) | P: 800-4-Kenall | F: 262-891-9701 | 10200 55th Street Kenosha, Wisconsin 53144, USA

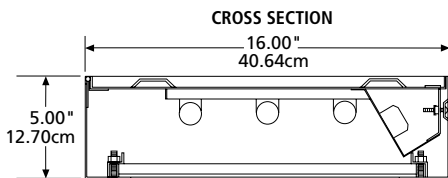
A brand of **legrand**

This product complies with the Buy American Act: manufactured in the United States with more than 50% of the component cost of US origin. It may be covered by patents found at [www.kenall.com/patents](http://www.kenall.com/patents). Content of specification sheets is subject to change; please consult [www.kenall.com](http://www.kenall.com) for current product details. ©2022 Kenall Mfg. Co.

# MIGHTY MAC™

## SCB SERIES

### DIMENSIONAL DATA



### MOUNTING HOLES

