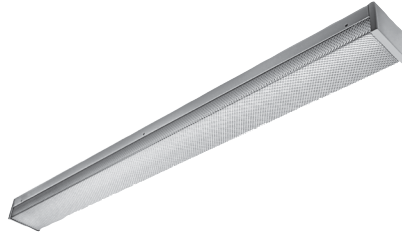


SHERIFF™

SH5 SERIES

PRODUCT FEATURES:

- » Surface mount – ceiling or wall; 5"×24", 5"×36", 5"×48"
- » ADA Compliant
- » 16-gauge cold rolled steel baseplate with seam welded end caps
- » P12 polycarbonate wraparound lens
- » Peace of Mind Guarantee® against breakage



PROJECT INFORMATION

Job Name _____

Fixture Type _____

Catalog Number _____

Approved by _____

SPECIFICATIONS

BASEPLATE: One-piece 16-gauge CRS baseplate with welded corners. Baseplate provided with four-point (2, 3, and 6 foot) or six-point (4 foot) mounting holes and one wireway hole – see Cross Section/Details. TGIC polyester powder coat – 5-stage pre-treatment. Salt spray test: 1,000 hours; Reflectance: 92%. Lens is positioned in baseplate channels and retained with stainless steel Torx® fasteners (two fasteners/2 and 3 foot; six fasteners/4 and 6 foot). Baseplate/end caps mount flush to ceiling or wall surface.

LENS: Cold formed .156" P12 polycarbonate lens. See Options for alternate lenses.

SOCKETS: Shock-resistant sockets with internal locking collar to ensure positive lamp retention.

HARDWARE: Stainless steel Torx® T-20 with center pin fasteners secure lens in baseplate channel.

ELECTRICAL: LED; Available 3000K, 3500K, 4000K and 5000K color temperatures, 82 CRI. 120-277VAC and 347VAC, 50/60Hz electrical input with serviceable high power factor electronic, constant-current driver (<20% THD, >0.95 PF). Standard 0-10V dimming with 1-100% range and dim-to-dark capabilities. 165µA max. source current. Optional embedded microwave motion sensor (MS) has factory default settings of 20 minute time out, dims down to 30%. LE: Class P ballasts. Fluorescent electronic 120/277/347 and dual voltage ballasts high power factor.

SENSOR & CONTROLS: Optional sensor available with compatible third party controls. To see the full list of compatible controls, [click here](#).

INSTALLATION: Four-point (2 foot and 3 foot) or six-point (4 foot) mounting required for Peace of Mind Guarantee®.

WARRANTY: Limited five (5) year warranty on LED lamps. [Peace of Mind Guarantee against breakage](#).

LISTINGS: UL and CUL listed for Wet Location – covered ceilings only. UL and CUL listed for Damp Locations – wall mount. ADA Compliant. Suitable for installation into -40°C to 40°C ambient environments, unless otherwise noted.



ORDERING INFORMATION (Ex: SH5-48-45L40K-DCC-DV-FS)

Model	Nom. Length	Lamp Qty	Lamp Type	Ballast/Driver	Ballast Qty	Voltage	Options	Accessories
SH5								
Nominal Length	3' Lengths			Ballast/Driver Type			Options	
24 2'	21 F21T5			DCC 0-10V Dimming LED Driver (LED only)			EL* Standard Lumen Battery Pack (32°F one-lamp operation)	
36 3'	25 F25T8			IS Instant Start Electronic <10% THD (T8)			.187 .187" P12 Polycarbonate Lens	
48 4'	39* F39T5HO (n/a with 3 lamps)			RS Rapid Start Electronic <10% THD (CFL, T8, T5, T5HO)			AL Marine Grade Aluminum Housing	
				SB Specified Ballast			BSS Brush Stainless Steel Housing	
Lamp Quantity*	4' Lengths			Ballast Quantity*			DLN LED Night Light w/Light Level Control (100% - 20% dimming; voltage-specific selection required; n/a 347V)	
1 One Lamp	45L30K 45 Watt 3000K LED			1 One			FS Single Fuse & Holder	
2 Two Lamps	45L35K 45 Watt 3500K LED			2 Two			KO Two 1/2" EMT Conduit Entry Knockouts (one per end cap)	
3 Three Lamps	45L40K 45 Watt 4000K LED						OP Opal Polycarbonate Lens	
	45L50K 45 Watt 5000K LED			Voltage			PM Pendant Mount	
Lamp Type	28 F28T5			120 120 Volt			PSS Painted Stainless Steel Housing	
2' Lengths	32 F32T8			277 277 Volt			MS Motion Sensor (4' LED Only; n/a with 347V)	
14 F14T5	54* F54T5HO (n/a with 3 lamps)			347 347 Volt (Consult Factory)			Accessories	
17 F17T8				DV 120-277 Volts			CMW Corner Mount Adapter – Wet Location Covered, Ceiling only	

* n/a with LED Lamp Type



www.kenall.com | P: 800-4-Kenall | F: 262-891-9701 | 10200 55th Street Kenosha, Wisconsin 53144, USA

A brand of **legrand**

This product complies with the Buy American Act: manufactured in the United States with more than 50% of the component cost of US origin. It may be covered by patents found at www.kenall.com/patents. Content of specification sheets is subject to change; please consult www.kenall.com for current product details. ©2022 Kenall Mfg. Co.

SHERIFF™

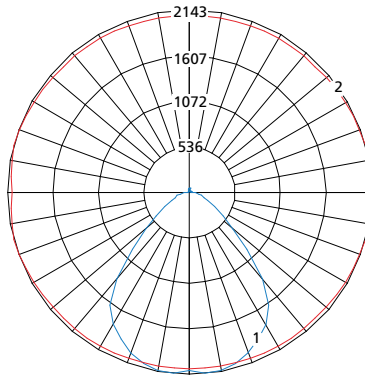
SH5 SERIES

PERFORMANCE

Lamp Type	Initial Delivered Lumens		Input Power (W)	Drive Current (mA)	Estd. L70 LED Life (Hrs)
	@ 25°C	Efficacy (lm/W)			
45L30K	4,534	94	48	100	80,000
45L35K	4,674	97			
45L40K	4,834	101			
45L50K	5,165	108			

Information subject to change without notice. Photometry tested to the IESNA LM-79-08 standard by an ILAC/ISO17025 accredited laboratory. For photometric data, please go to www.kenall.com

Model: SH5-48-45L40K-DCC-DV

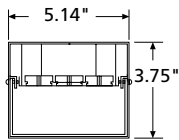


Maximum Candela = 2143 Located At Horizontal Angle = 195, Vertical Angle = 5

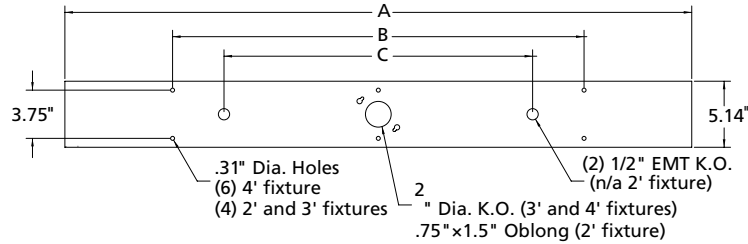
- 1 - Vertical Plane Through Horizontal Angles (195-15) (Through Max. Cd.)
- 2 - Horizontal Cone Through Vertical Angle (5) (Through Max. Cd.)

DIMENSIONAL DATA

CROSS SECTION



MOUNTING HOLES



DIMENSIONAL DATA (IN INCHES)

	A	B	C
5x24	24.75	16.00	n/a
5x36	36.75	24.00	24.00
5x48	48.75	32.00	24.00

