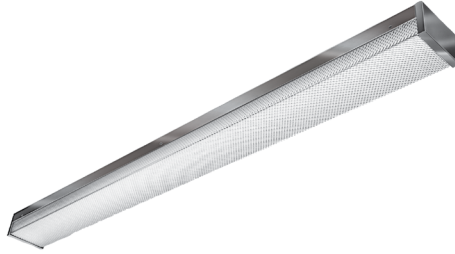


SHERIFF™

SH596 SERIES

PRODUCT FEATURES:

- » Surface mount – ceiling or wall; 5" x 96"
- » ADA Compliant
- » 16-gauge cold rolled steel baseplate with seam welded end caps
- » P12 polycarbonate wraparound lens
- » Peace of Mind Guarantee® against breakage



PROJECT INFORMATION

Job Name _____

Fixture Type _____

Catalog Number _____

Approved by _____

SPECIFICATIONS

HOUSING: 16-gauge CRS baseplate and seam welded end caps. Baseplate provided with fourteen mounting holes and one wireway hole – see Cross Section/Details. TGIC polyester powder coat – 5-stage pre-treatment. Salt spray test: 1,000 hours; Reflectance: 92%. See Options for alternative materials and finishes. Lens is positioned in baseplate channels and retained with ten stainless steel Torx® fasteners. Baseplate/end caps mount flush to ceiling or wall surface.

LENS: Cold formed .156" P12 polycarbonate lens. See Options for alternate lenses.

SOCKETS: Shock-resistant sockets with internal locking collar to ensure positive lamp retention.

HARDWARE: Stainless steel Torx® T-20 with center pin fasteners secure lens in baseplate channel.

ELECTRICAL: Class P ballasts. Fluorescent electronic 120/277/347 and dual voltage ballasts high power factor.

INSTALLATION: Ten point mounting required for Peace of Mind Guarantee®.

WARRANTY: Limited one (1) year Kenall fluorescent warranty. Peace of Mind Guarantee against breakage.

LISTINGS: UL and CUL listed for Wet Locations – covered ceilings only. UL and CUL listed for Damp Locations – wall mount. ADA compliant.

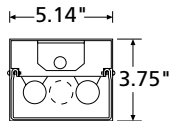


ORDERING INFORMATION (Ex: SH5-96-2-96-RS-1-DV-FS)

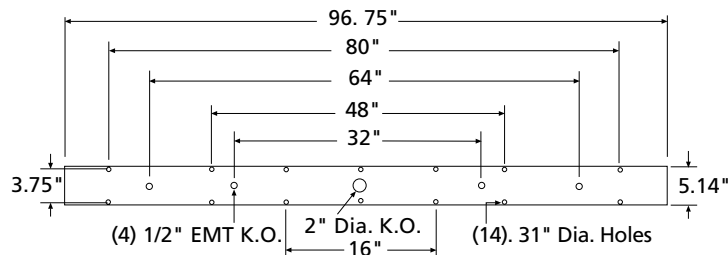
Model	Nom. Length	Lamp Qty	Lamp Type	Ballast Type	Ballast Qty	Voltage	Options
SH5	96						
Nominal Length	4' Lamp Type			Voltage			Options
96 8'	28 F28T5			120 120 Volt			EL Standard Lumen Battery Pack (32°F one-lamp operation)
	32 F32T8			277 277 Volt			PEL High Lumen Battery Pack (32°F one-lamp operation)
Lamp Quantity (cross section)	54 F54T5HO			347 347 Volt (4', T8 only)			.187 .187" P12 Polycarbonate Lens
1 One				DV 120-277 Volts			OP Opal Polycarbonate Lens
2 Two	8' Lamp Type						AL Marine Grade Aluminum Housing
3 Three (F32T8 only)	96 F96T8HO						BSS Brush Stainless Steel Housing
							PSS Painted Stainless Steel Housing
	Ballast Type						FS Single Fuse & Holder
	IS Instant Start Electronic <10% THD (T8)						KO Two 1/2" EMT Conduit Entry Knockouts (one per end cap)
	RS Rapid Start Electronic <10% THD						PM Pendant Mount
	SB Specified Ballast						
	Ballast Quantity						
	1 One						*Available with one lamp only
	2 Two						

DIMENSIONAL DATA

CROSS SECTION



MOUNTING HOLES



www.kenall.com | P: 800-4-Kenall | F: 262-891-9701 | 10200 55th Street Kenosha, Wisconsin 53144, USA

A brand of **legrand**

This product complies with the Buy American Act: manufactured in the United States with more than 50% of the component cost of US origin. It may be covered by patents found at www.kenall.com/patents. Content of specification sheets is subject to change; please consult www.kenall.com for current product details. ©2022 Kenall Mfg. Co.