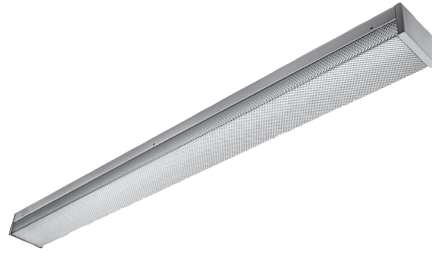


# SHERIFF™

## TSH5 SERIES

### PRODUCT FEATURES:

- » Surface mount – ceiling or wall; 5" x 48"
- » ADA Compliant



### PROJECT INFORMATION

Job Name \_\_\_\_\_

Fixture Type \_\_\_\_\_

Catalog Number \_\_\_\_\_

Approved by \_\_\_\_\_

### SPECIFICATIONS

**HOUSING:** One-piece seam welded 16-gauge type 304 stainless steel construction. See Ordering Information for finish.

**LENS:** Cold formed .156" P12 polycarbonate lens. See Options for alternate lenses.

**FASTENERS:** Torx® Head stainless steel fasteners standard. See Options for stainless steel center-pin reject Allen Head (AH) or Phillips Head (PH) fasteners.

**FINISH:** Brushed stainless steel finish (#4) or white TGIC polyester powder coat – 5-stage pre-treatment; Salt spray test: 1,000 hours; Reflectance: 92%.

**ELECTRICAL:** Available 3000K, 3500K, 4000K and 5000K color temperatures, 82 CRI. 120-277VAC and 347VAC, 50/60Hz electrical input with serviceable high power factor electronic, constant-current driver (<20% THD, >0.95 PF). Standard 0-10V dimming with 1-100% range and dim-to-dark capabilities. 165µA max. source current. Consult factory for fluorescent option.

**SENSOR & CONTROLS:** Optional sensor available with compatible third party controls. To see the full list of compatible controls, [click here](#).

**INSTALLATION:** Six-point (4-foot) mounting required for Peace of Mind Guarantee®. For housing without wiring and mounting holes, see Field Drilled Installation Holes Option (FDIH).

**WARRANTY:** Limited five (5) year warranty. [Peace of Mind Guarantee](#) against breakage.

**LISTINGS:** UL and CUL listed for Wet Locations – covered ceilings only. UL and CUL listed for Damp Locations – wall mount. ADA compliant.



### ORDERING INFORMATION (Ex: TSH5-48-BSS-45L40K-DCC-DV)

Model	Length	Finish	Lamp Type	Driver	Voltage	Options
<b>TSH5</b>	<b>48</b>			<b>DCC</b>		
	<b>Nominal Length</b>			<b>Driver Type</b>		<b>Options</b>
	48 4'			<b>DCC</b> 0-10V Dimming LED Driver		<b>.187</b> .187" P12 Polycarbonate Lens
	<b>Finish</b>			<b>Voltage</b>		<b>AH</b> Allen Head fasteners
	<b>BSS</b> Brushed Stainless Steel Housing			<b>DV</b> 120-277 Volts		<b>FDIH</b> Field Drilled Installation Holes
	<b>PSS</b> Painted Stainless Steel Housing			<b>120</b> 120 Volt		<b>FS</b> Single Fuse & Holder
	<b>Lamp Type</b>			<b>277</b> 277 Volt		<b>KO</b> Two 1/2" EMT Conduit Entry Knockouts (one per end cap)
	<b>45L30K</b> 45 Watt 3000K LED			<b>347</b> 347 Volt		<b>OP</b> Opal Polycarbonate Lens
	<b>45L35K</b> 45 Watt 3500K LED					<b>PH</b> Phillips Head fasteners
	<b>45L40K</b> 45 Watt 4000K LED					<b>SSIN</b> Stainless Steel Interior
	<b>45L50K</b> 45 Watt 5000K LED					



www.kenall.com | P: 800-4-Kenall | F: 262-891-9701 | 10200 55th Street Kenosha, Wisconsin 53144, USA

This product complies with the Buy American Act: manufactured in the United States with more than 50% of the component cost of US origin. It may be covered by patents found at [www.kenall.com/patents](http://www.kenall.com/patents). Content of specification sheets is subject to change; please consult [www.kenall.com](http://www.kenall.com) for current product details. ©2022 Kenall Mfg. Co.

A brand of **legrand**

# SHERIFF™

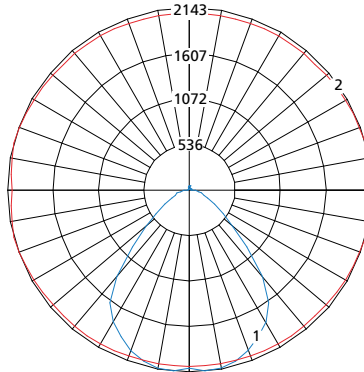
## TSH5 SERIES

### PERFORMANCE

Lamp Type	Initial Delivered Lumens		Input Power (W)	Drive Current (mA)	Estd. L70 LED Life (Hrs)
	@ 25°C	Efficacy (lm/W)			
45L30K	4,534	94	48	100	80,000
45L35K	4,674	97			
45L40K	4,834	101			
45L50K	5,165	108			

Information subject to change without notice. Photometry tested to the IESNA LM-79-08 standard by an ILAC/ISO17025 accredited laboratory. For photometric data, please go to [www.kenall.com](http://www.kenall.com)

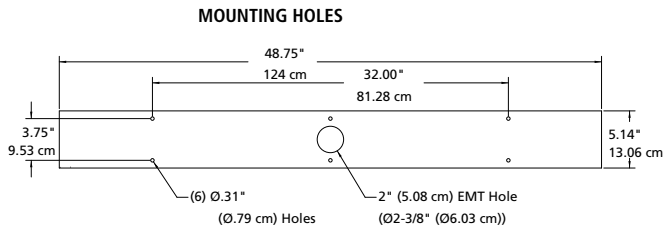
Model: TSH548-xxx-45L40K-DCC-DV



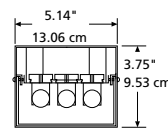
Maximum Candela = 2143 Located At Horizontal Angle = 195, Vertical Angle = 5

- 1 - Vertical Plane Through Horizontal Angles (195-15) (Through Max. Cd.)
- 2 - Horizontal Cone Through Vertical Angle (5) (Through Max. Cd.)

### DIMENSIONAL DATA



### CROSS SECTION



[www.kenall.com](http://www.kenall.com) | P: 800-4-Kenall | F: 262-891-9701 | 10200 55th Street Kenosha, Wisconsin 53144, USA

This product complies with the Buy American Act: manufactured in the United States with more than 50% of the component cost of US origin. It may be covered by patents found at [www.kenall.com/patents](http://www.kenall.com/patents). Content of specification sheets is subject to change; please consult [www.kenall.com](http://www.kenall.com) for current product details. ©2022 Kenall Mfg. Co.

A brand of **legrand**