

# MIGHTY MAC™

## WDS SERIES

### PRODUCT FEATURES:

- » Surface wall mount – (10"×11")×26", (10"×11")×51"
- » Dual purpose – luminaire with built-in bookshelf
- » TIG welded housing with no post grinding for additional strength
- » Vertically adjustable bracket secured to housing via thru-studs



### PROJECT INFORMATION

Job Name \_\_\_\_\_

Fixture Type \_\_\_\_\_

Catalog Number \_\_\_\_\_

Approved by \_\_\_\_\_

### SPECIFICATIONS

**HOUSING:** One-piece die-formed prime grade material as specified – see ordering information. Corners continuously seam welded and smooth with no post grinding (TIG).

**LENS:** As specified – maximum thickness .625" – see ordering information. Kenall recommends a prismatic inner lens and a clear outer lens. Two clear lenses used in combination cannot be provided.

**LENS RETENTION:** Vertically adjustable continuous "Z" brackets of prime grade material, secured to housing via thru-studs (6" maximum spacing).

**DOOR:** One-piece die-formed prime grade material as specified – see ordering information.

**HINGE:** Staked and welded external piano hinge (1/2" knuckle/1/8" diameter pin) standard. See Options for Internal Hinge (IH) and Full Length Internal Hinge (IHF).

**FASTENERS:** Hardened security screws as specified – see ordering information. Fully recessed.

**FINISH:** TGIC polyester powder coat – 5-stage pre-treatment. Salt spray test: 1,000 hours; Reflectance: 92%.

**LAMPS:** Quantity and type as specified – see ordering information. Lamps supplied by others.

**BALLAST:** Quantity and type as specified – see ordering information. All ballasts UL listed class P.

**LUMINOUS SEAL:** Polyurethane foam prevents light leaks from luminaire base.

**PHOTOMETRICS:** For photometric information, go to [www.kenall.com](http://www.kenall.com).

**WARRANTY:** One (1) year warranty for Kenall fluorescent products.

**LISTINGS:** UL and CUL listed for damp locations.



### ORDERING INFORMATION (Ex: WDS-2-0/0-2-17-RS-1-120- 1/B-1)

Model	Size	Hsg./Base Plate	Lamp Qty	Lamp Type	Ballast Type	Ballast Qty	Voltage	Lens (Inner/Outer)	Fasteners	Options
<b>WDS</b>		/						/		
<b>Nominal Size</b>			<b>Lamp Quantity</b>		<b>Ballast Quantity</b>				<b>Fastener</b>	
2 (10"×11")×26"			1 One		1 One				1 Torx® T-20 Head w/ Center Pin	
4 (10"×11")×50"			2 Two						2 Allen Head w/ Center Pin	
<b>Housing/Door Material</b>			<b>Lamp Type</b>		<b>Voltage</b>				<b>Options</b>	
0 14-Ga CRS (Painted White)			<b>2' Nominal Length</b>		120 120 Volts				EL Standard Lumen EL Pack	
1 16-Ga CRS (Painted White)			17 F17T8		277 277 Volts				PEL High Lumen EL Pack	
2 18-Ga CRS (Painted White)					347 347 Volts				SEL Specified EL Pack	
3 14-Ga SS (Painted White)			<b>4' Nominal Length</b>		<b>Lens (Inner/Outer)‡</b>				DLN LED Night Light w/Light Level Control (100% - 20%. Voltage specific selection required)	
4 16-Ga SS (Painted White)			32 F32T8		0 No Lens				FS Single Fuse & Holder	
6 14-Ga SS (Brushed)					1 .125" Prismatic Acrylic				IH Internal Hinge	
7 16-Ga SS (Brushed)			<b>Ballast Type</b>		2 .125" Prismatic Polycarbonate				IHF Full Length Internal Hinge	
			IS Instant Start Electronic <10% THD (T8)		3 .125" Textured Polycarbonate				PSL* Push Switch – Left side (as viewed facing fixture)	
			RS Rapid Start Electronic <10% THD (T8)		4 .125" Clear Polycarbonate				PSR* Push Switch – Right side (as viewed facing fixture)	
			SB Specified Ballast		5 .156" Prismatic Polycarbonate				RGT Removable Gear Tray	
					6 .250" Textured Tempered Glass				TCL* Touch Control Switch – Left side (as viewed facing fixture)	
					7 .187" Prismatic Polycarbonate				TCR* Touch Control Switch – Right side (as viewed facing fixture)	
					8 .187" Clear Polycarbonate				TN PL Night Light – 5/7/9 Watt (Lamp supplied by others; 120/277V specific selection required)	
					9 .250" Clear Tempered Glass				UV Ultraviolet Filter	
					A .375" Clear Polycarbonate					
					B .375" Clear Polycarbonate					
					C .375" Clear Tempered Glass					
					J .500" Clear Polycarbonate					
					P .500" Clear Tempered Glass					

‡ Refer to lens specifications  
\* n/a with 347V



[www.kenall.com](http://www.kenall.com) | P: 800-4-Kenall | F: 262-891-9701 | 10200 55th Street Kenosha, Wisconsin 53144, USA

A brand of **legrand**

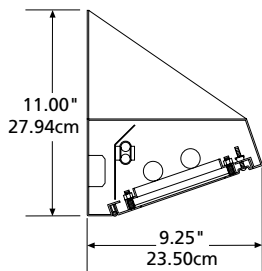
This product complies with the Buy American Act: manufactured in the United States with more than 50% of the component cost of US origin. It may be covered by patents found at [www.kenall.com/patents](http://www.kenall.com/patents). Content of specification sheets is subject to change; please consult [www.kenall.com](http://www.kenall.com) for current product details. ©2022 Kenall Mfg. Co.

# MIGHTY MAC™

## WDS SERIES

### DIMENSIONAL DATA

CROSS SECTION



MOUNTING HOLES

